



MALHERBEX™
PROPERTY GROUP



Willie Malherbe
0834257174
willie@malherbex.com

Contact Head Office

011 7869364

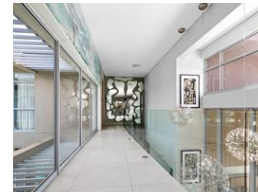
Unit 1 Cyrus House (Building 13) Mulberry
Hill Office Park, Dainfern, Sandton, 2191

6 Bedroom House For Sale in Blair Atholl Golf Estate

UNDER OFFER



Web Ref RL1433



R67,000,000

6 6.5 7

Monthly Bond Repayment R680,203.40

Calculated over 20 years at 10.75% with no deposit.

Transfer Costs R8,382,371.00 **Bond Costs** R132,285.00

These calculations are only a guide. Please ask your conveyancer for exact calculations.

Monthly Levy R15,980 **Monthly Rates** R8,000

Exquisite Residence with Unmatched Luxury and Security

Nestled on an expansive 2996 square meter plot, this extraordinary 1600 square meter mansion is a signature property within the prestigious Blair Atholl Golf and Equestrian Estate. Designed to perfection, this home offers the ultimate fusion of modern elegance and functional luxury. A testament to sophisticated living, the residence features an open-plan layout that effortlessly transitions between expansive indoor spaces and beautifully landscaped gardens. The epitome of modern design, the home incorporates natural materials and state-of-the-art finishes, creating a sense of relaxed elegance.

Whether entertaining guests or enjoying serene family moments, this home offers a wealth of exceptional spaces, including a spacious covered patio, infinity pool, boma with braai and bar, and a luxurious cigar room. At the heart of the...

Features

Pets Allowed Yes

Interior

Bedrooms	6
Bathrooms	6.5
Kitchens	1
Recep. Rooms	2
Studies	1
Furnished	Yes

Exterior

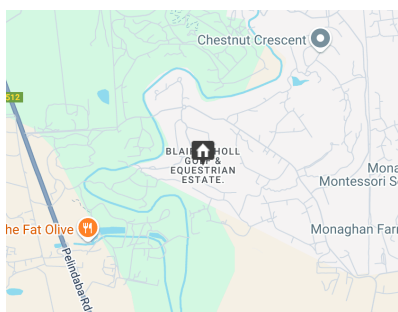
Garages	7
Security	Yes
Dom. Accom.	1
Pool	Yes

Sizes

Floor Size	1,600m ²
Land Size	2,996m ²

Extras

Generator Solar Home automation Vegetable garden Computerised irrigation garden Air conditioning Fireplace Underfloor heating Jacuzzi



<https://www.malherbex.com>