



MALHERBEX™
PROPERTY GROUP



Willie Malherbe
0834257174
willie@malherbex.com

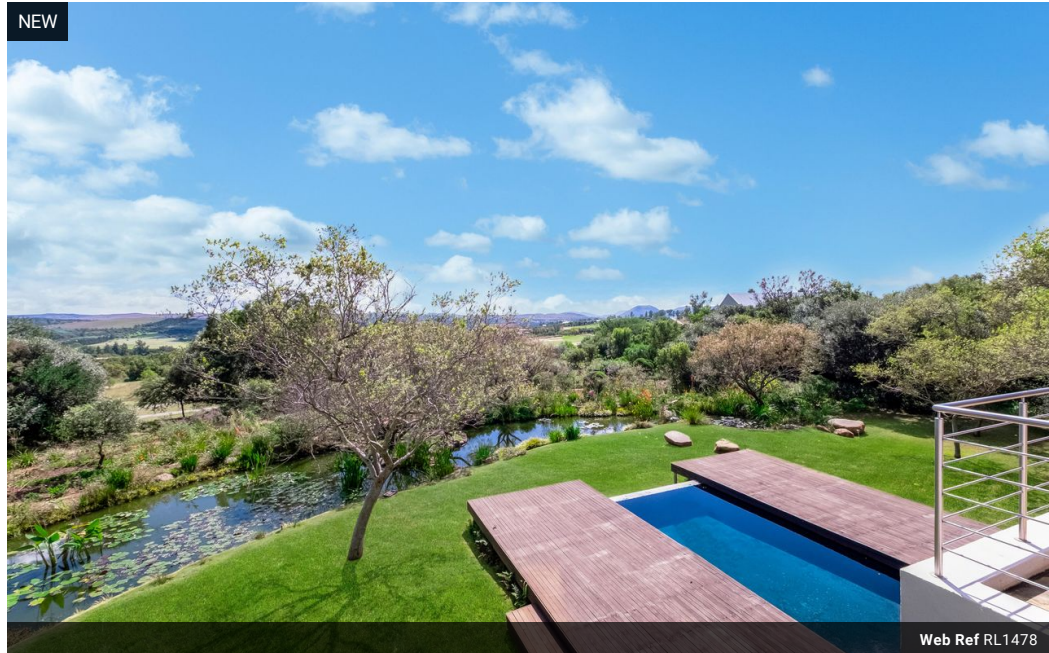
Contact Head Office

011 7869364

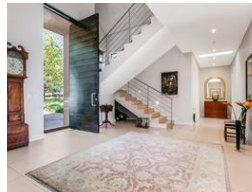
Unit 1 Cyrus House (Building 13) Mulberry
Hill Office Park, Dainfern, Sandton, 2191

5 Bedroom House For Sale in Blair Atholl Golf Estate

NEW



Web Ref RL1478



R13,950,000

5 5 3

Monthly Bond Repayment R143,990.28

Calculated over 20 years at 11% with no deposit.

Transfer Costs R1,450,514.00 **Bond Costs** R103,785.00

These calculations are only a guide. Please ask your conveyancer for exact calculations.

Monthly Levy R16,730

An Elegant Country Manor in Prestigious Blair Atholl

This exquisite modern country home is positioned on an elevated, north-facing stand within one of the most sought-after settings in Blair Atholl Golf Estate. Surrounded by pristine natural beauty and landscaped gardens, this remarkable property offers panoramic, uninterrupted views of the majestic Magaliesberg mountain range, offering a harmonious blend of refined elegance and serene living.

The architecture seamlessly blends classical elegance with modern comfort, embracing the best of indoor-outdoor living. The open-plan kitchen is fully equipped with integrated appliances, a built-in coffee machine, and double ovens, flowing effortlessly into the family TV lounge and expansive patios. Additional living spaces include a formal dining area and multiple entertainment areas overlooking the enchanting garden.

The...

Features

Pets Allowed Yes

Interior

Bedrooms	5
Bathrooms	5
Kitchens	1
Recep. Rooms	3
Studies	1

Exterior

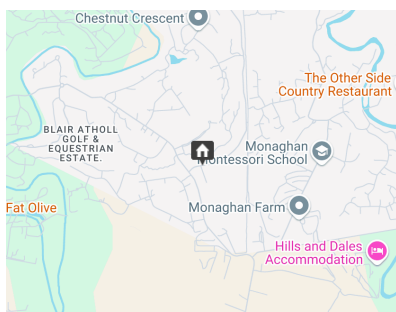
Garages	3
Security	Yes
Dom. Accom.	1
Pool	Yes

Sizes

Floor Size	660m ²
Land Size	3,564m ²

Extras

Computerised irrigation



<https://www.malherbex.com>