



MALHERBEX<sup>™</sup>  
PROPERTY GROUP



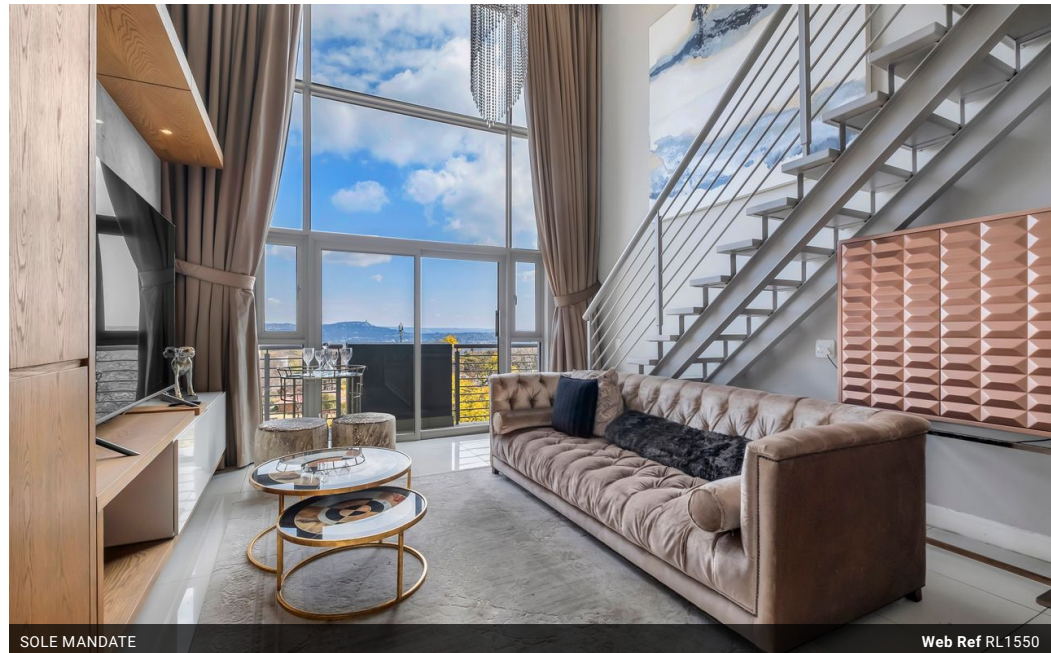
**Dwayne Moffat**  
0680258263  
dwayne@malherbex.com

Contact Head Office

011 7869364

Unit 1 Cyrus House (Building 13) Mulberry  
Hill Office Park, Dainfern, Sandton, 2191

## 4 Bedroom Apartment For Sale in Rosebank



SOLE MANDATE

Web Ref RL1550



R4,495,000

🛏 4 🛁 4

**Monthly Bond Repayment** R44,877.18

Calculated over 20 years at 10.5% with no deposit.

**Transfer Costs** R342,630.00 **Bond Costs** R57,265.00

These calculations are only a guide. Please ask your conveyancer for exact calculations.

**Monthly Levy** R9,785 **Monthly Rates** R7,350

### Duplex 4-Bedroom Apartment in the Heart of Rosebank

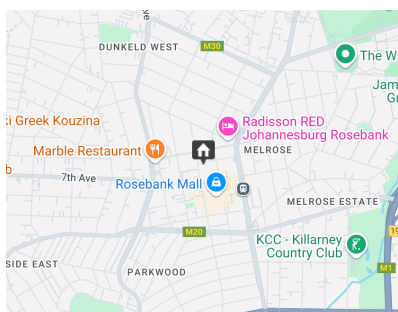
Located in the vibrant heart of Rosebank, this exceptional duplex penthouse is the result of combining three individual apartments into one expansive and sophisticated residence. Designed to blend contemporary finishes with functional elegance, the home offers a versatile lifestyle opportunity, ideal as a luxurious primary residence or a premium rental investment.

The ground floor welcomes you with an impressive double-volume living area that flows seamlessly into an open-plan kitchen and dining space, creating a central hub for both relaxed living and entertaining. Two generously proportioned en suite bedrooms are also situated on this level, providing comfort and privacy for family or guests.

A stylish staircase leads to the upper floor, where a cozy pajama lounge sets the tone for relaxed evenings. The primary suite is a...

### Features

<b>Pets Allowed</b>	Yes		
<b>Interior</b>		<b>Exterior</b>	<b>Sizes</b>
Bedrooms	4	Carports / Parkings	2
Bathrooms	4	Security	Yes
Kitchens	1	Pool	Yes
Recep. Rooms	3	Views	True
Furnished	No		
			Floor Size 200m <sup>2</sup>



<https://www.malherbex.com>