



MALHERBEX™  
PROPERTY GROUP



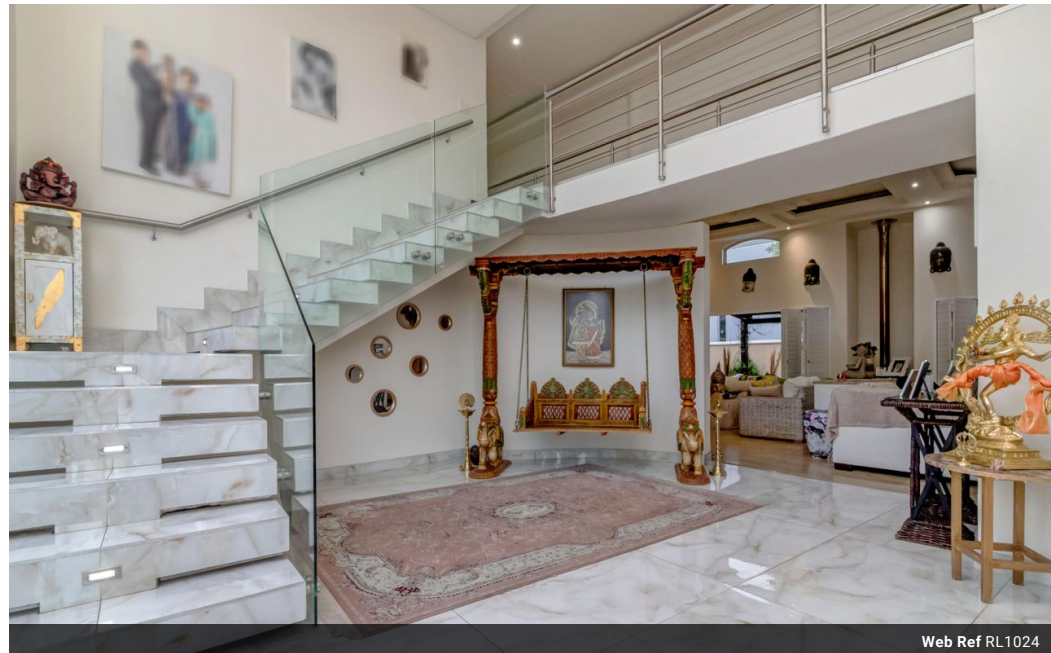
Willie Malherbe  
0834257174  
willie@malherbex.com

Contact Head Office

011 7869364

Unit 1 Cyrus House (Building 13) Mulberry  
Hill Office Park, Dainfern, Sandton, 2191

## 5 Bedroom House For Sale in Helderfontein Estate



Web Ref RL1024



R7,700,000

🛏 5 🚿 5.5 🚗 3

**Monthly Bond Repayment** R78,172.63

Calculated over 20 years at 10.75% with no deposit.

**Transfer Costs** R716,228.00 **Bond Costs** R75,285.00

These calculations are only a guide. Please ask your conveyancer for exact calculations.

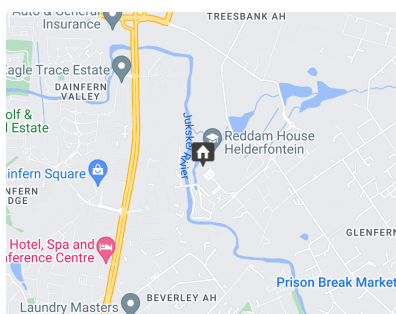
**Monthly Levy** R3,679

### 5 Bedroom home with cottage in Helderfontein Eco Estate

Spacious five-bedroom residence, complete with a fully-equipped separate cottage situated in Helderfontein Estate. This contemporary home boasts a striking double-volume glass entrance and an impressive staircase that bathes the interior in natural light. On entering this lovely family home, you are greeted with an open plan design, lots of natural light and space. The open-plan kitchen, equipped with a gas hob, seamlessly blends with the living rooms and extends to a double patio overlooking a meticulously landscaped garden and a generously sized, sun-soaked, solar-heated pool. The expansive living and dining area, adorned with a wood-burning combustion fireplace, features high vaulted ceilings, accentuating the home's generous proportions. The accommodation comprises of five en-suite bedrooms, three on the upper level and...

### Features

Pets Allowed		Yes			
Interior		Exterior		Sizes	
Bedrooms	5	Garages	3	Floor Size	546m <sup>2</sup>
Bathrooms	5.5	Security	Yes	Land Size	1,013m <sup>2</sup>
Kitchens	1	Dom. Accom.	1		
Recep. Rooms	2	Pool	Yes		



<https://www.malherbex.com>