

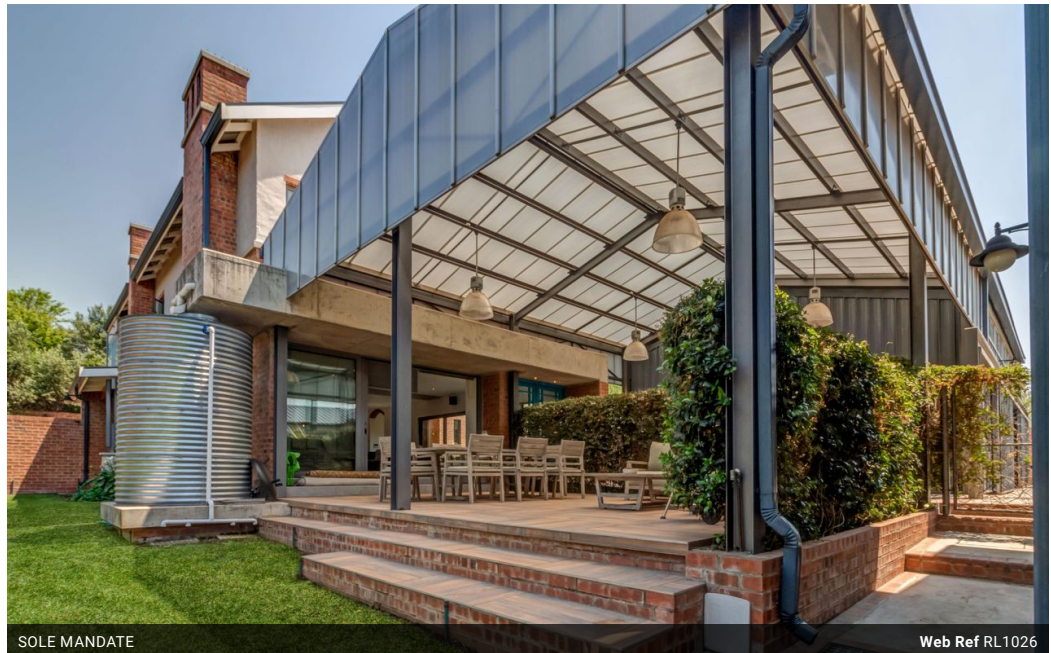


Willie Malherbe
0834257174
willie@malherbex.com

Contact Head Office

011 7869364

Unit 1 Cyrus House (Building 13) Mulberry Hill Office Park, Dainfern, Sandton, 2191



SOLE MANDATE

Web Ref RL1026



R11,500,000

🛏️ 4 🚿 4.5 🏠 3

Monthly Bond Repayment R118,701.67
Calculated over 20 years at 11% with no deposit.

Transfer Costs R1,157,289.00 **Bond Costs** R94,285.00
These calculations are only a guide. Please ask your conveyancer for exact calculations.

Monthly Levy R3,700

Modern family living

INVESTMENT SALE

We are proud to present one of Helderfontein's signature homes.

This industrial-themed home offers four en-suite bedrooms, 2 office spaces that make it very convenient to work entirely from home with a team and staff quarters.

As you enter this home, you are greeted by a flowing and balanced living and dining area with a surround sound and a Calore Italian pellet-burning fireplace, surrounded by three undercover patios and a large covered entertainment area. The open-plan living and dining rooms flow seamlessly into a large country-style kitchen with a spacious pantry and scullery. The kitchen has state-of-the-art appliances, including an Ilve 8-burner gas stove with two electric ovens.

On the ground floor, you'll also find a guest suite fitted with a kitchenette, bathroom, reading room and patio,...

Features

Pets Allowed	Yes				
Interior		Exterior		Sizes	
Bedrooms	4	Garages	3	Floor Size	643m ²
Bathrooms	4.5	Dom. Accom.	1	Land Size	1,181m ²
Kitchens	1	Pool	No		
Recep. Rooms	3				
Studies	1				

