



MALHERBEX™
PROPERTY GROUP



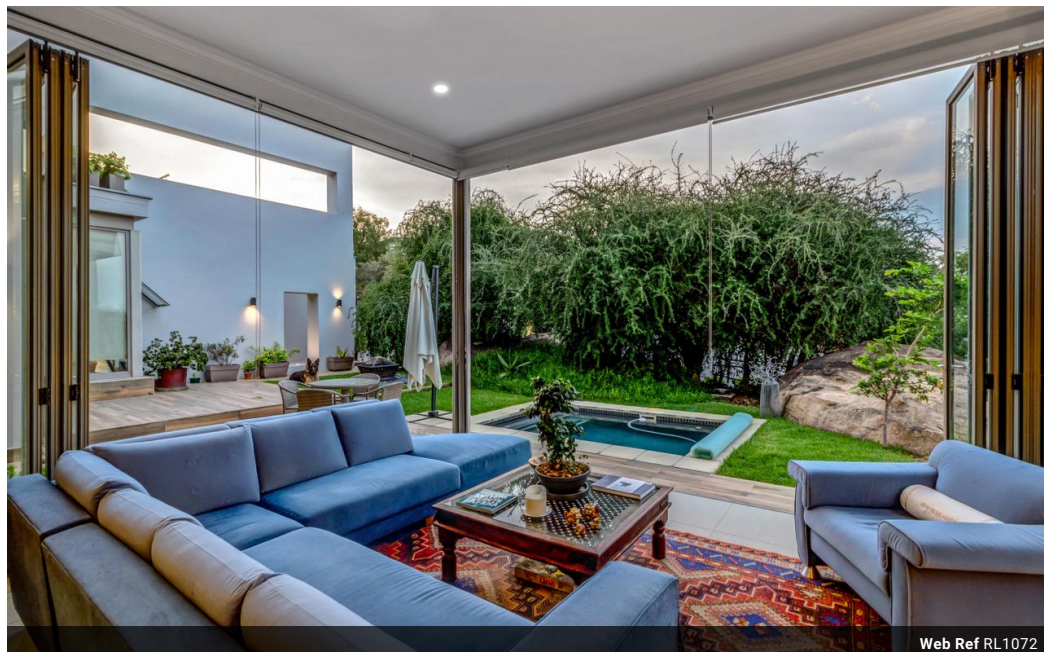
Willie Malherbe
0834257174
willie@malherbex.com

Contact Head Office

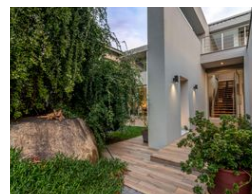
011 7869364

Unit 1 Cyrus House (Building 13) Mulberry
Hill Office Park, Dainfern, Sandton, 2191

4 Bedroom House For Sale in Helderfontein Estate



Web Ref RL1072



R6,650,000

🛏 4 🚿 4.5 🚗 2

Monthly Bond Repayment R67,512.73

Calculated over 20 years at 10.75% with no deposit.

Transfer Costs R595,266.00 **Bond Costs** R70,535.00

These calculations are only a guide. Please ask your conveyancer for exact calculations.

Monthly Levy R4,200

4 Bedroom House For Sale in Helderfontein Estate

Investment Sale with tenant in place

Introducing a contemporary and chic family residence in the sought-after Helderfontein Estate phase 1. Phase 1 is established and completed with beautiful parks and greenbelt areas. The estate has two club houses. The brand new clubhouse offers a restaurant, gym, and a swimming pool entertaining area.

Perched atop a rocky outcrop, this extraordinary house commands a breathtaking view due to its high vantage point - the highest in the estate - offering unrivaled panoramic views of the surrounding landscape. The tapestry between the rugged, ancient rock formation and the sleek, contemporary architecture creates a mesmerizing blend of timelessness and modernity.

The house seamlessly integrates with its natural surroundings, boasting floor-to-ceiling windows that invite the outdoors...

Features

Pets Allowed Yes

Interior

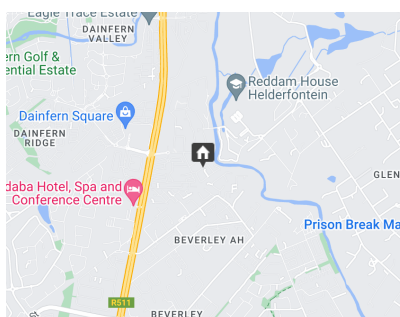
Bedrooms	4
Bathrooms	4.5
Kitchens	1
Recep. Rooms	3
Furnished	No

Exterior

Garages	2
Security	Yes
Dom. Accom.	1
Pool	Yes
Views	True

Sizes

Floor Size	397m ²
Land Size	773m ²



<https://www.malherbex.com>