



MALHERBEX™
PROPERTY GROUP



Willie Malherbe
0834257174
willie@malherbex.com

Contact Head Office

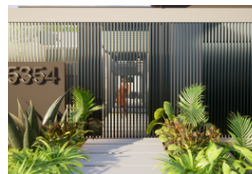
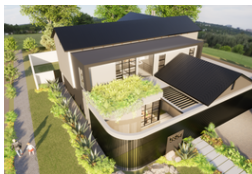
011 7869364

Unit 1 Cyrus House (Building 13) Mulberry
Hill Office Park, Dainfern, Sandton, 2191

5 Bedroom House For Sale in Helderfontein Estate



Web Ref RL1235



R9,890,000

🛏 5 🛁 5.5 🚗 3

Monthly Bond Repayment R100,406.14

Calculated over 20 years at 10.75% with no deposit.

Transfer Costs R968,576.00 **Bond Costs** R84,785.00

These calculations are only a guide. Please ask your conveyancer for exact calculations.

Discover Your Dream Home

The opportunity to build in a home in Helderfontein estate.

Turnkey building which offers redefined luxury and great design in Helderfontein Eco Estate.

Experience the pinnacle of luxury living in a home designed by Studios Architects and constructed by Lock Developments, where quality craftsmanship meets your personal vision. Every detail is meticulously crafted to elevate your lifestyle, blending elegance with functionality in a stunning residence designed for you.

Welcome to Sophisticated Living: This impressive 430sqm contemporary double-storey home, situated on a 649sqm stand, offers the ultimate in style and comfort.

Key Features:

- 5 Luxurious Bedrooms. Each with its own en-suite bathroom, providing privacy and convenience.
- 5.5 Elegant Bathrooms. Tastefully designed to meet all your needs.
- Architectural...

Features

Pets Allowed Yes

Interior

| | |
|--------------|-----|
| Bedrooms | 5 |
| Bathrooms | 5.5 |
| Kitchens | 1 |
| Recep. Rooms | 3 |
| Studies | 1 |
| Furnished | No |

Exterior

| | |
|-------------|-------|
| Garages | 3 |
| Security | No |
| Dom. Accom. | 1 |
| Pool | Yes |
| Views | False |

Sizes

| | |
|------------|-------------------|
| Floor Size | 430m ² |
| Land Size | 649m ² |



<https://www.malherbex.com>