



MALHERBEX™
PROPERTY GROUP



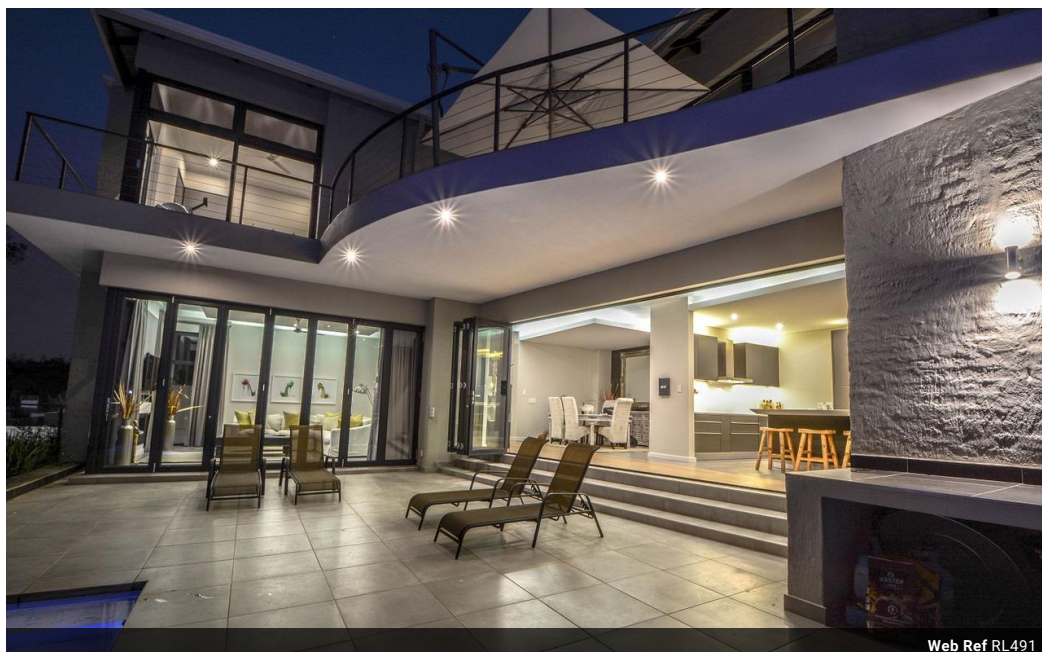
Willie Malherbe
0834257174
willie@malherbex.com

Contact Head Office

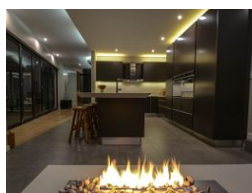
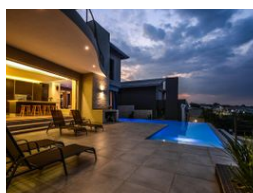
011 7869364

Unit 1 Cyrus House (Building 13) Mulberry
Hill Office Park, Dainfern, Sandton, 2191

4 Bedroom House For Sale in Helderfontein Estate



Web Ref RL491



R9,800,000

4 4 3

Monthly Bond Repayment R99,492.44

Calculated over 20 years at 10.75% with no deposit.

Transfer Costs R958,676.00 **Bond Costs** R84,785.00

These calculations are only a guide. Please ask your conveyancer for exact calculations.

Monthly Levy R3,383

MODERN, FAMILY HOME

Investment sale. Rental income of R50 000 until 1 May 2024.

We are proud to present the ultimate home in terms of design, position, and architectural wonder. Set in an exclusive part of Helderfontein Estate, the home has views over the river valley and Estate.

High ceilings combined with ample light set the tone from the moment you enter - truly one of a kind and needs to be seen to appreciate.

Clean lines with open-plan living areas centered around the central entertainment and outdoor area offering views of the swimming pool.

The master chef kitchen is one of a kind, with integrated appliances, you will

This home offers a one of kind, master chef kitchen with integrated appliances, four en-suite bedrooms, a modern bar lounge, a lift from the garages to the upper floor and much more.

Call today for a private...

Features

Pets Allowed Yes

Interior

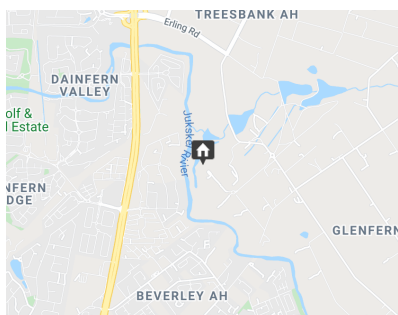
Bedrooms	4
Bathrooms	4
Kitchens	1
Recep. Rooms	3
Furnished	No

Exterior

Garages	3
Carports / Parkings	3
Security	Yes
Pool	Yes
Views	True

Sizes

Floor Size	463m ²
Land Size	704m ²



<https://www.malherbex.com>