



MALHERBEX™
PROPERTY GROUP



Willie Malherbe
0834257174
willie@malherbex.com

Contact Head Office

011 7869364

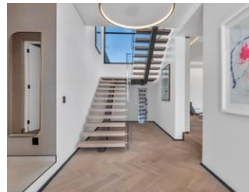
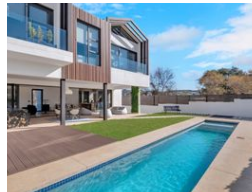
Unit 1 Cyrus House (Building 13) Mulberry
Hill Office Park, Dainfern, Sandton, 2191

4 Bedroom House For Sale in Helderfontein Estate

FEATURED



Web Ref RL767



R12,850,000

Monthly Bond Repayment R130,456.92

Calculated over 20 years at 10.75% with no deposit.

Transfer Costs R1,311,252.00 **Bond Costs** R99,035.00

These calculations are only a guide. Please ask your conveyancer for exact calculations.

Monthly Levy R4,230

🛏️ 4 🚿 4 🚗 2

Quality and Designer Home

Magnificently designed and planned, to create a perfect haven for the modern family, wanting to enjoy an upmarket eco lifestyle. Featuring free-flowing open-plan living spaces that integrate seamlessly into all the areas. Offering four en-suite bedrooms, double automated garage, clean lines, modern and state-of-the-art finishes throughout, herringbone solid wooden flooring, pyjama lounge, swimming pool with wooden decking, built-in bar area on double sized patio, balconies, back up solar power, borehole, home automation system, audiovisual, fiber and gas connected, staff-suite and double garaging with extra visitors parking. Brand new and spectacular

This upmarket Estate offers an environment with excellent security, unquestionably beautiful greenbelt areas, indigenous gardens, dams, bird hides, play parks, and picnic areas,...

Features

Pets Allowed Yes

Interior

Bedrooms	4
Bathrooms	4
Kitchens	1
Recep. Rooms	3
Studies	1
Furnished	No

Exterior

Garages	2
Security	Yes
Dom. Accom.	1
Pool	Yes
Views	False

Sizes

Floor Size	452m ²
Land Size	696m ²



<https://www.malherbex.com>