



MALHERBEX<sup>™</sup>  
PROPERTY GROUP



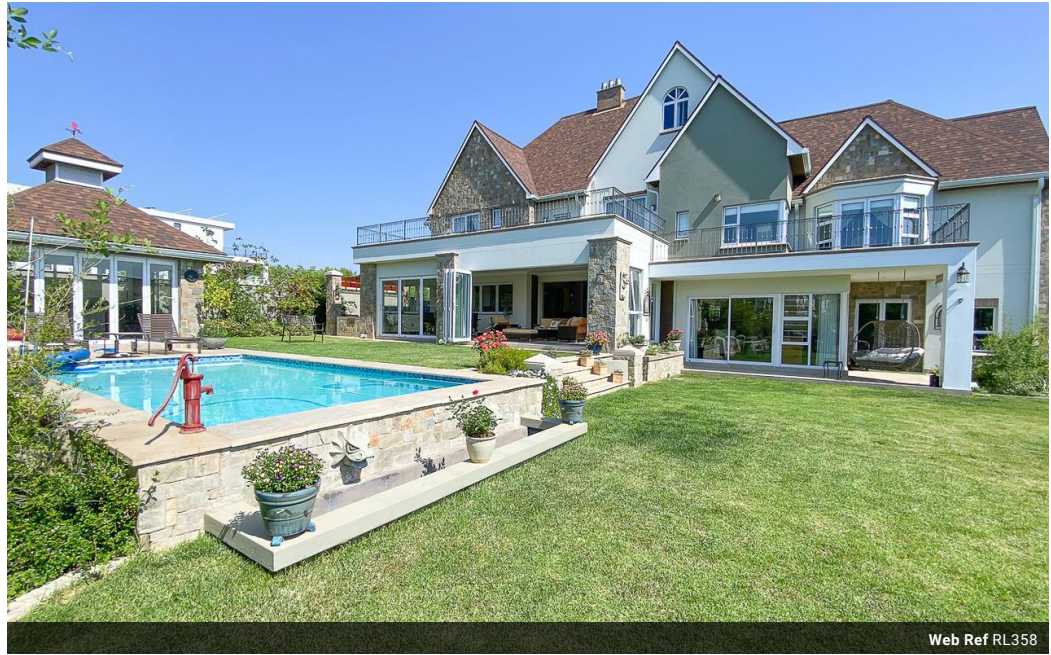
**Willie Malherbe**  
0834257174  
willie@malherbex.com

Contact Head Office

011 7869364

Unit 1 Cyrus House (Building 13) Mulberry Hill Office Park, Dainfern, Sandton, 2191

## 4 Bedroom House For Sale in Steyn City



Web Ref RL358



# R16,000,000

**Monthly Bond Repayment** R162,436.63  
Calculated over 20 years at 10.75% with no deposit.

**Transfer Costs** R1,730,521.00    **Bond Costs** R113,285.00  
These calculations are only a guide. Please ask your conveyancer for exact calculations.

**Monthly Levy** R2,950

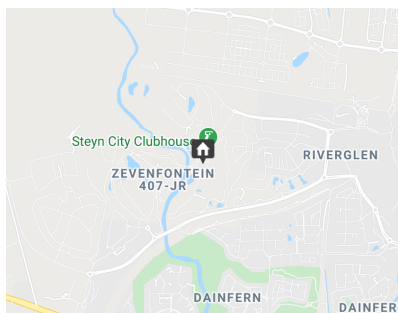
4    4.5    4

### Victorian Classic with Modern Touches

This brand-new Victorian style home will surprise you with its modern building techniques. Insulated airflow ceilings, Wi-Fi enabled irrigation from the under-ground rainwater collection tanks, and recycled roof shingles from ceramic pots, are just some of the exciting green building features which make this classic style desirable. Once you walk into the entrance hall you feel the modern home comfort, with a look through gas fireplace warming the open concept living environment. Take the stairs or use the lift to get up to the living areas with four spectacular bedrooms all en-suite with impeccable finishes and attention to detail, the entire top floor is temperature-controlled, all with balcony access. The home is built in the suburb of Park Ridge, Steyn City. It is situated on the corner of a cul-de-sac and has quick access...

### Features

<b>Pets Allowed</b>	Yes				
<b>Interior</b>		<b>Exterior</b>		<b>Sizes</b>	
Bedrooms	4	Garages	4	Floor Size	588m <sup>2</sup>
Bathrooms	4.5	Security	Yes	Land Size	1,399m <sup>2</sup>
Kitchens	1	Dom. Accom.	1		
Recep. Rooms	6	Pool	Yes		
Studies	1	Views	Yes		



<https://www.malherbex.com>