



MALHERBEX™  
PROPERTY GROUP



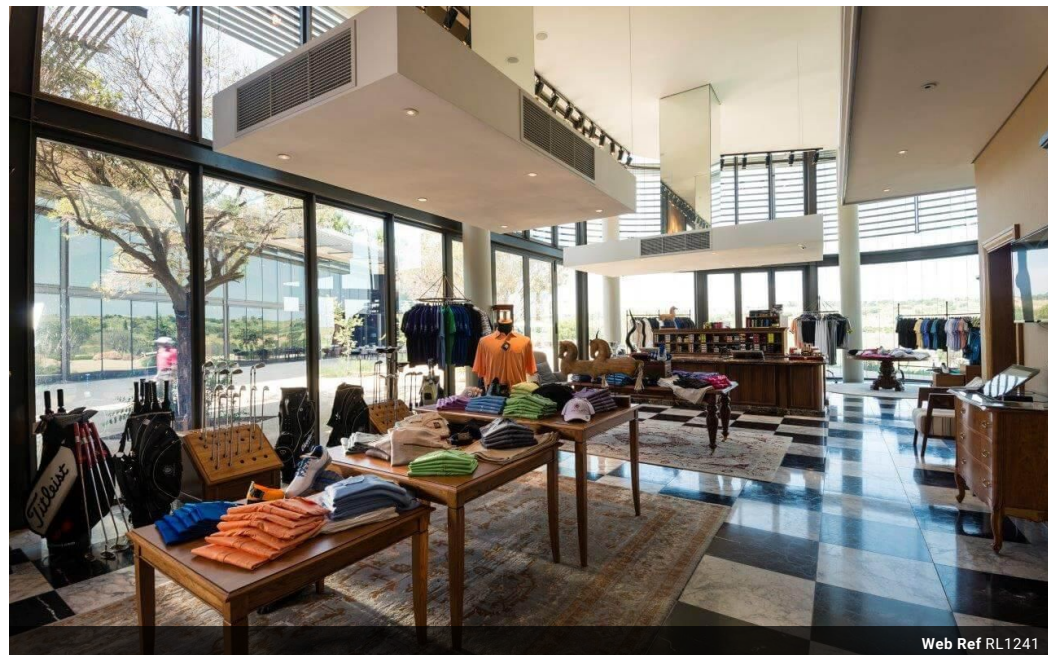
**Willie Malherbe**  
0834257174  
willie@malherbex.com

Contact Head Office

011 7869364

Unit 1 Cyrus House (Building 13) Mulberry  
Hill Office Park, Dainfern, Sandton, 2191

1,001m<sup>2</sup> Vacant Land For Sale in Steyn City



Web Ref RL1241



R4,800,000

**Monthly Bond Repayment** R48,730.99

Calculated over 20 years at 10.75% with no deposit.

**Transfer Costs** R378,177.00    **Bond Costs** R59,150.00

These calculations are only a guide. Please ask your conveyancer for exact calculations.

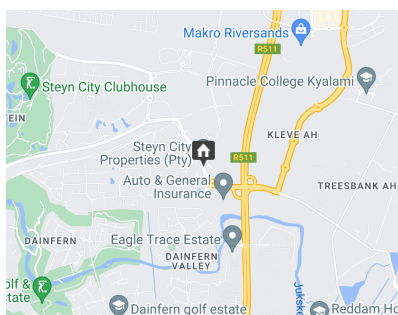
**Monthly Levy** R4,830

### Premium stand

Build your dream house on this rectangular stand. Included the price is approved plans designed by SPS Architects.

Call us today to schedule a viewing.

### Features



<https://www.malherbex.com>