



MALHERBEX™  
PROPERTY GROUP



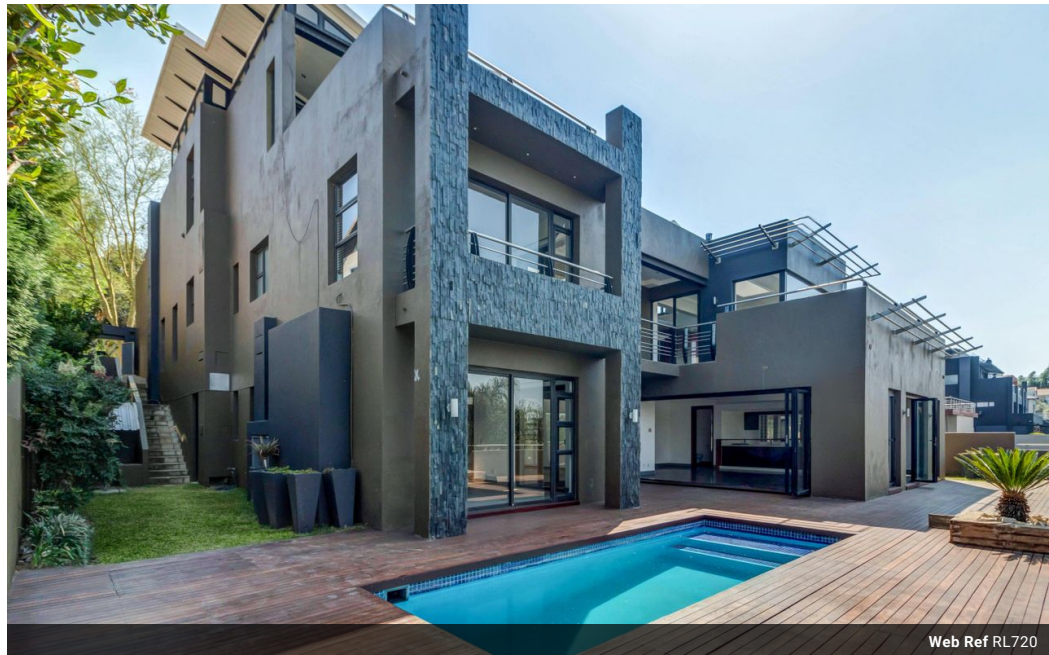
Willie Malherbe  
0834257174  
willie@malherbex.com

Contact Head Office

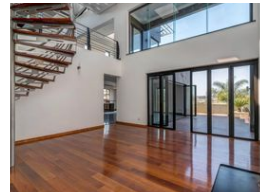
011 7869364

Unit 1 Cyrus House (Building 13) Mulberry  
Hill Office Park, Dainfern, Sandton, 2191

## 4 Bedroom House For Sale in Eagle Canyon Golf Estate



Web Ref RL720



R9,995,000

🛏 4 🛁 4.5 🚗 5

**Monthly Bond Repayment** R101,472.13

Calculated over 20 years at 10.75% with no deposit.

**Transfer Costs** R980,126.00 **Bond Costs** R84,785.00

These calculations are only a guide. Please ask your conveyancer for exact calculations.

**Monthly Levy** R3,240 **Monthly Rates** R4,600

### Spectacular ultra-modern home with breathtaking views

A home with a difference for the selective property connoisseur, set on a ridge overlooking the Colorado Links golf course in the Eagle Canyon Golf Estate.

Boasting various reception areas, a separate cigar/wine lounge, built-in bar with access to the decked pool area.

Four en-suite bedrooms with balcony access, main bedroom with a separate study, and access to a balcony-jacuzzi with uninterrupted views of the golf course.

Staff accommodation and garaging for five cars.

Eagle Canyon Estate prides itself with a top-notch clubhouse offering a restaurant, bar, spa, and gym.

A wonderful lifestyle to admire offering green belts and dams.

### Features

<b>Pets Allowed</b>	Yes		
<b>Interior</b>		<b>Exterior</b>	<b>Sizes</b>
Bedrooms	4	Garages	Land Size
Bathrooms	4.5	Dom. Accom.	882m²
Kitchens	1	Pool	Yes
Recep. Rooms	4		
Studies	1		



<https://www.malherbex.com>