



MALHERBEX[™]
PROPERTY GROUP



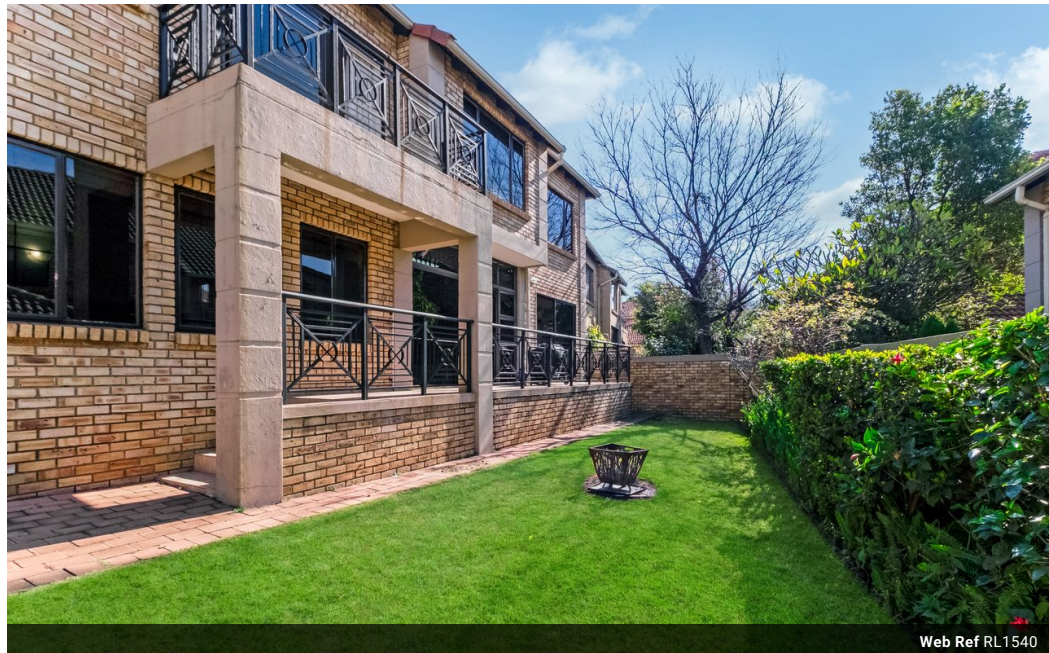
Sean O'Grady
0718429999
sean@malherbex.com

Contact Head Office

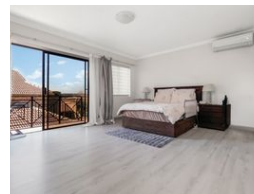
011 7869364

Unit 1 Cyrus House (Building 13) Mulberry
Hill Office Park, Dainfern, Sandton, 2191

3 Bedroom House For Sale in Beverley



Web Ref RL1540



R2,595,000

3 2.5 2

Monthly Bond Repayment R26,345.19

Calculated over 20 years at 10.75% with no deposit.

Transfer Costs R123,320.00 **Bond Costs** R38,415.00

These calculations are only a guide. Please ask your conveyancer for exact calculations.

Monthly Levy R2,700 **Monthly Rates** R2,100

3 Bedroom House For Sale in Beverley

Step into this beautifully upgraded face brick townhouse, offering an impressive 255 m² of refined living space tailored for modern comfort and convenience. The home features spacious tiled living areas that flow seamlessly into an enclosed patio, perfect for year-round relaxation. The patio opens onto a low-maintenance wrap-around garden, complete with a JoJo tank, Wendy house for additional storage, and smart landscaping for easy upkeep.

The heart of the home is a granite kitchen, ideal for culinary enthusiasts, featuring soft-close cabinetry, a separate scullery, and ample counter space to make meal preparation effortless.

Upstairs, New laminate flooring throughout adds a fresh, modern touch.

you'll find three generously sized bedrooms, including a main suite with private balcony overlooking the garden. Two full bathrooms...

Features

Pets Allowed	Yes		
Interior		Exterior	
Bedrooms	3	Garages	2
Bathrooms	2.5	Carports / Parkings	2
Kitchens	1	Security	Yes
Recep. Rooms	2	Pool	No
Studies	1	Views	False
Furnished	No		
		Sizes	
		Floor Size	255m ²