



MALHERBEX™  
PROPERTY GROUP



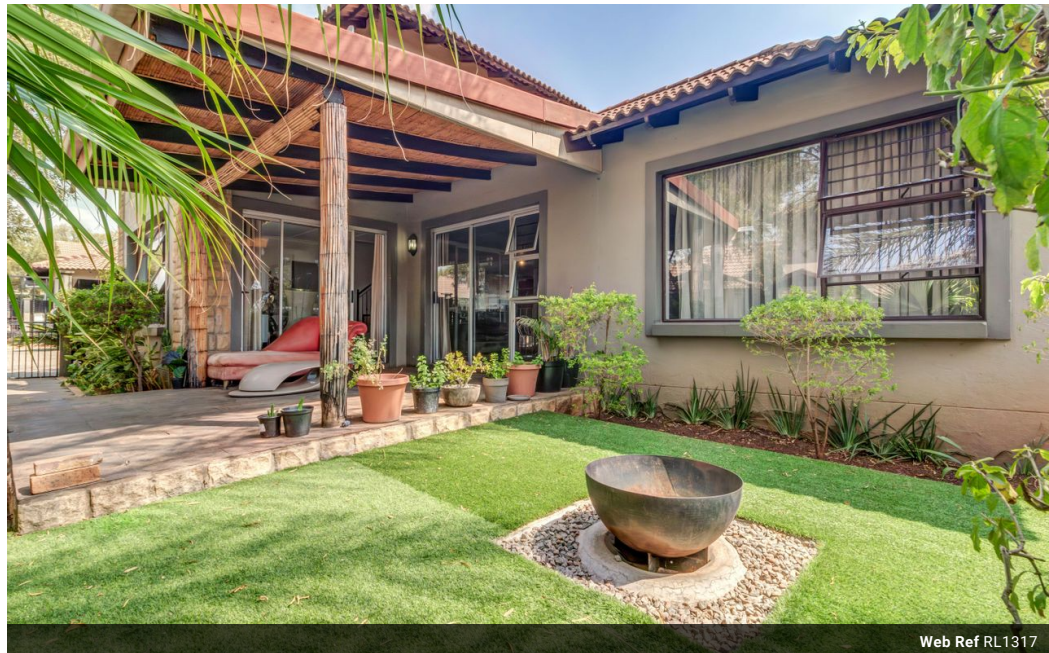
Sean O'Grady  
0718429999  
sean@malherbex.com

Contact Head Office

011 7869364

Unit 1 Cyrus House (Building 13) Mulberry  
Hill Office Park, Dainfern, Sandton, 2191

## 4 Bedroom Duplex For Sale in Broadacres



Web Ref RL1317



R2,445,000

4 2.5 2

**Monthly Bond Repayment** R24,822.35

Calculated over 20 years at 10.75% with no deposit.

**Transfer Costs** R111,320.00 **Bond Costs** R38,415.00

These calculations are only a guide. Please ask your conveyancer for exact calculations.

**Monthly Levy** R2,050 **Monthly Rates** R2,600

## 4 Bedroom Duplex For Sale in Broadacres

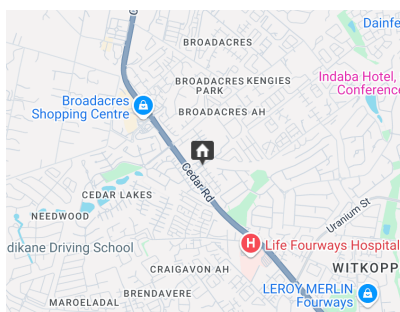
Discover the perfect blend of modern living and tranquility in this stunning 4-bedroom home located in a prestigious estate. Designed for families seeking comfort and functionality, the open-plan layout effortlessly connects the kitchen, dining area, and lounge, creating an ideal space for gatherings and entertaining. The lounge, bathed in natural light, opens onto a patio with beautiful garden views, perfect for relaxation or alfresco dining.

The kitchen is a chef's dream, featuring sleek cabinetry and ample counter space, keeping you connected to the living areas. Four well-appointed bedrooms, including a luxurious master suite, provide privacy and comfort, with stylishly finished bathrooms throughout.

Additional features include a double garage, visitor parking, and estate amenities, offering security and peace of...

## Features

Pets Allowed		Yes	
Interior		Exterior	
Bedrooms	4	Garages	2
Bathrooms	2.5	Carports / Parkings	2
Recep. Rooms	2	Security	No
Studies	1	Pool	No
Furnished	No	Views	False
Sizes		Land Size	
		325m²	



<https://www.malherbex.com>