



MALHERBEX™
PROPERTY GROUP



Dwayne Moffat
0680258263
dwayne@malherbex.com

Contact Head Office

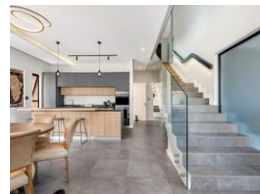
011 7869364

Unit 1 Cyrus House (Building 13) Mulberry
Hill Office Park, Dainfern, Sandton, 2191

4 Bedroom House For Sale in Bryanston



Web Ref RL1507



R7,499,000

🛏 4 🚿 4 🚗 2

Monthly Bond Repayment R76,132.02

Calculated over 20 years at 10.75% with no deposit.

Transfer Costs R694,118.00 **Bond Costs** R75,285.00

These calculations are only a guide. Please ask your conveyancer for exact calculations.

Monthly Rates R4,950

Sophisticated Contemporary Living

Nestled in a sought-after setting, this impeccably designed home offers the perfect fusion of elegance, comfort, and modern convenience.

Upstairs, you'll find three generously sized bedrooms, each with its own stylish en suite bathroom, ensuring personal space and comfort for the whole family. A versatile study on the lower level can easily serve as a fourth bedroom - with its own en suite bathroom.

The heart of the home boasts a spacious open-concept lounge and dining area that flows effortlessly into a sleek, designer kitchen complete with a separate scullery. This well-considered layout caters to both relaxed family living and sophisticated entertaining.

Outdoor living is equally impressive, with a sparkling pool, an inviting fire pit/boma, and a beautifully manicured garden.

Additional features include staff...

Features

Pets Allowed		Yes			
Interior		Exterior		Sizes	
Bedrooms	4	Garages	2	Floor Size	349m²
Bathrooms	4	Carports / Parkings	2	Land Size	878m²
Kitchens	1	Security	Yes		
Recep. Rooms	2	Dom. Accom.	1		
Furnished	No	Pool	Yes		
		Views	False		



<https://www.malherbex.com>