



MALHERBEX™
PROPERTY GROUP



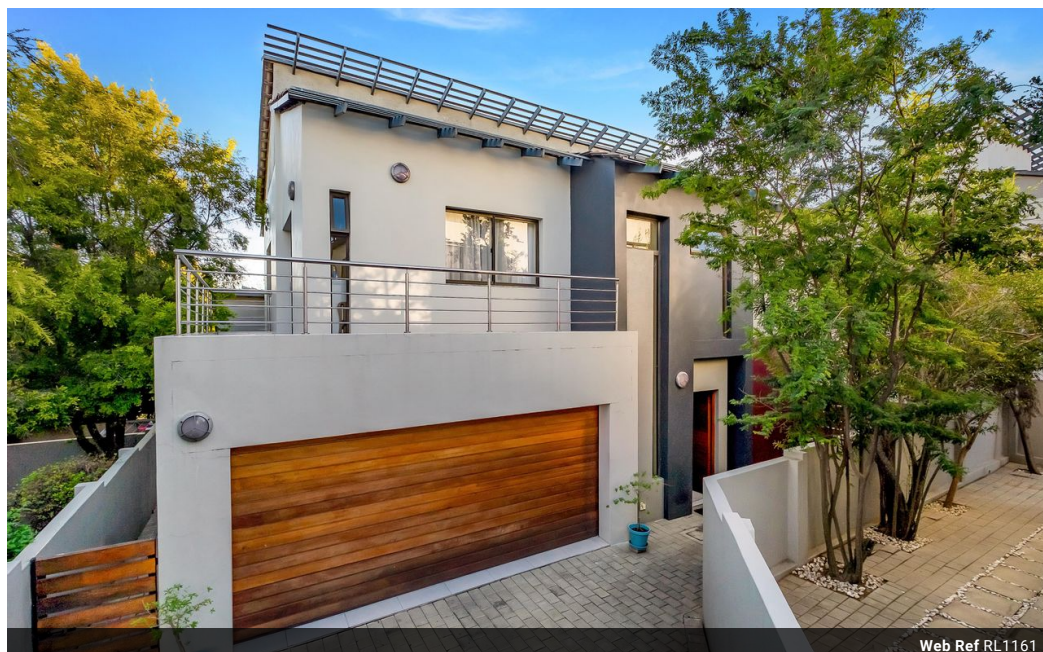
Busi Chizwina
0713847066
busi@malherbex.com

Contact Head Office

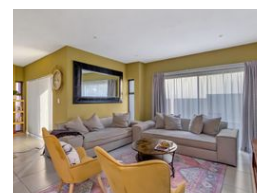
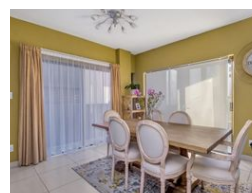
011 7869364

Unit 1 Cyrus House (Building 13) Mulberry
Hill Office Park, Dainfern, Sandton, 2191

3 Bedroom Cluster For Sale in Craigavon



Web Ref RL1161



R2,450,000

🛏 3 🚿 2.5 🚗 2

Monthly Bond Repayment R24,873.11

Calculated over 20 years at 10.75% with no deposit.

Transfer Costs R111,720.00 **Bond Costs** R38,415.00

These calculations are only a guide. Please ask your conveyancer for exact calculations.

Monthly Levy R1,930 **Monthly Rates** R1,300

Contemporary 3 bedroom Cluster

Introducing this elegant modern 3-bedroom, 2.5-bathroom cluster home nestled within a secure estate in Craigavon.

The entrance leads to a spacious open-plan living area bathed in natural light through the sliding doors which ensure a seamless flow between indoor and outdoor spaces making it the ideal home for entertaining. Step out onto the covered patio with a built-in braai area, overlooking a low-maintenance garden, adding to the home's elegant simplicity and practicality. The kitchen boasts sleek granite countertops and ample storage, seamlessly merging elegance with practicality. A well-lit, scenic staircase leads to three bedrooms, including a serene main bedroom with an ensuite bathroom and built-in cupboards, providing a tranquil retreat.

Enjoy peace of mind with 24-hour access control in the estate, along with...

Features

Pets Allowed Yes

Interior

Bedrooms	3
Bathrooms	2.5
Kitchens	1
Recep. Rooms	2
Furnished	No

Exterior

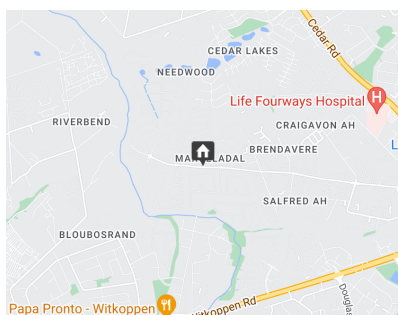
Garages	2
Security	Yes
Pool	No

Sizes

Land Size	253m²
-----------	-------

Extras

Private Garden Balcony Security 24 Hour Access Guard House Guard



<https://www.malherbex.com>