



MALHERBEX™  
PROPERTY GROUP



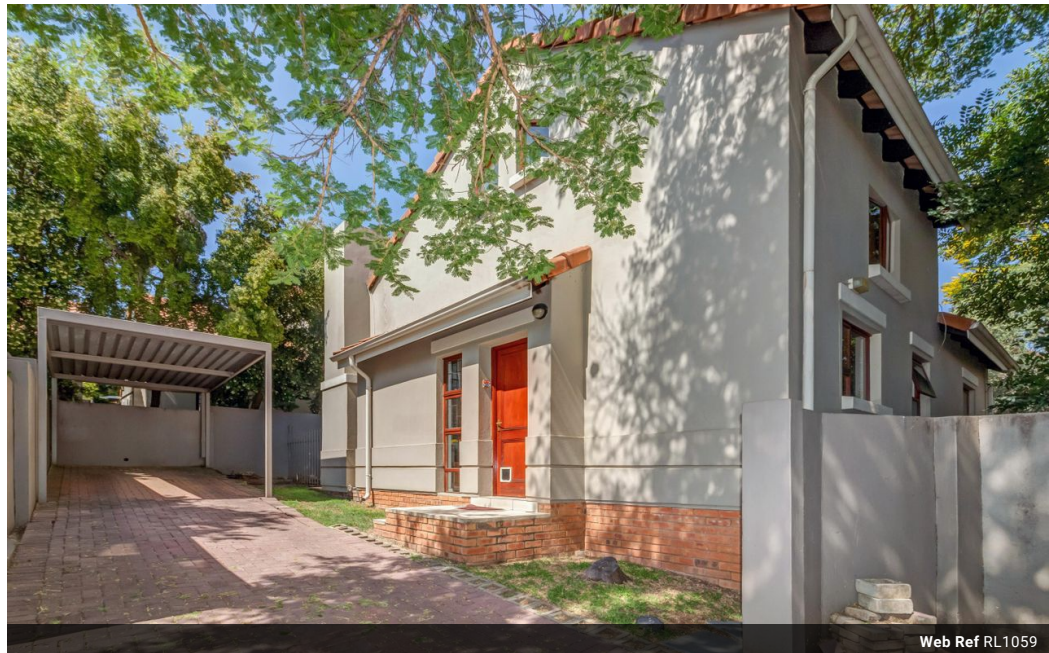
Janine Meyer  
0716890860  
janine@malherbex.com

Contact Head Office

011 7869364

Unit 1 Cyrus House (Building 13) Mulberry  
Hill Office Park, Dainfern, Sandton, 2191

## 2 Bedroom Duplex For Sale in Craigavon



Web Ref RL1059



R1,299,000

2 2

**Monthly Bond Repayment** R13,187.82

Calculated over 20 years at 10.75% with no deposit.

**Transfer Costs** R37,587.00 **Bond Costs** R27,105.00

These calculations are only a guide. Please ask your conveyancer for exact calculations.

**Monthly Levy** R2,780 **Monthly Rates** R718

## 2 Bedroom Duplex For Sale in Craigavon

Investment Buyers Only-Tenant in place.

Nestled within a peaceful complex in the heart of Craigavon, discover a haven of comfort and charm in this inviting two-bedroom duplex. Boasting a loft area and a private garden, this residence is designed for those who appreciate tranquility and contemporary living.

Key Features:

**Two Bedrooms with Loft Area:** Experience the versatility of a thoughtfully designed loft space, adding an extra dimension to your living area.

**Private Garden:** Step outside into your own private oasis, where the beautifully landscaped garden invites relaxation and outdoor enjoyment.

**Tranquil Complex Setting:** Embrace the peace and quiet of a well-maintained complex, providing a serene backdrop to your daily life.

**Contemporary Design:** Enjoy the modern aesthetic of a well-crafted duplex, where...

## Features

**Pets Allowed** Yes

### Interior

Bedrooms	2
Bathrooms	2
Kitchens	1
Recep. Rooms	2

### Exterior

Carports / Parkings	2
Pool	Yes

### Sizes

Floor Size	101m <sup>2</sup>
Land Size	150m <sup>2</sup>



<https://www.malherbex.com>