



MALHERBEX™
PROPERTY GROUP



Willie Malherbe
0834257174
willie@malherbex.com

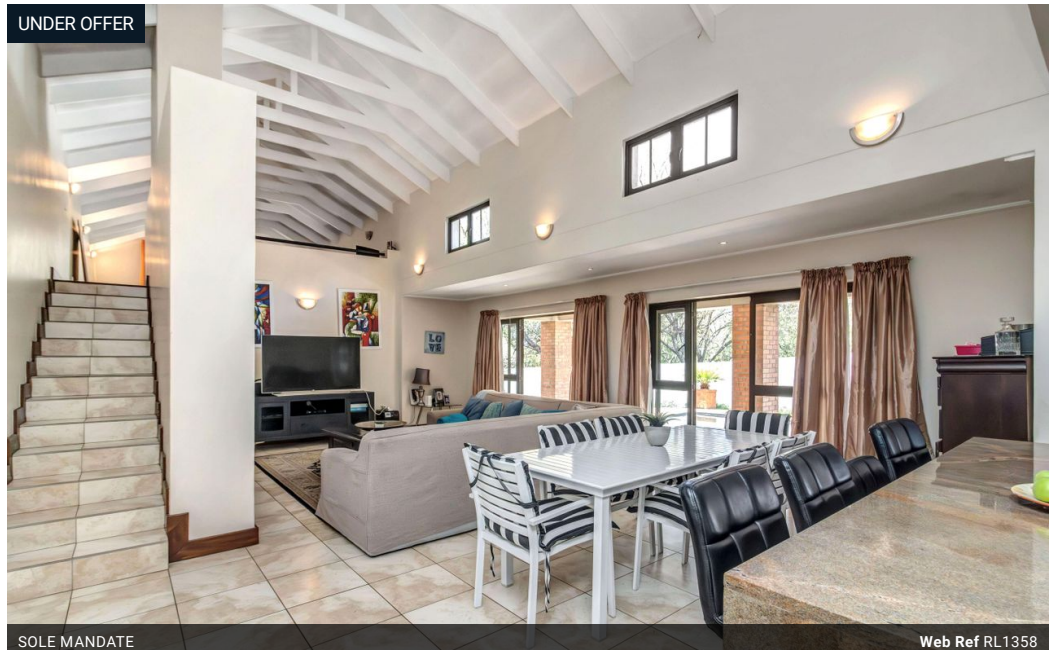
Contact Head Office

011 7869364

Unit 1 Cyrus House (Building 13) Mulberry
Hill Office Park, Dainfern, Sandton, 2191

3 Bedroom Freestanding For Sale in Dainfern Golf Estate

UNDER OFFER



SOLE MANDATE

Web Ref RL1358



R4,750,000

3 3.5 2

Monthly Bond Repayment R47,423.04

Calculated over 20 years at 10.5% with no deposit.

Transfer Costs R372,848.00 Bond Costs R59,150.00

These calculations are only a guide. Please ask your conveyancer for exact calculations.

Monthly Levy R4,720

Three bedroom Family Home in Dainfern Golf Estate

EXCLUSIVE SOLE AGENT

No Transfer Duty

Discover luxury living in a quiet area of the prestigious Dainfern Golf Estate. This stunning three-bedroom, three-bathroom home is perfect for families seeking comfort, elegance, and security. This property offers high ceilings and exposed beams with natural light streaming throughout the house. Everything you need for an exceptional lifestyle. The spacious kitchen, lounge with a gas fireplace, and dining room seamlessly lead to a large double sized covered patio, perfect for entertaining or relaxing. Outside, you'll find a gorgeous garden, large pool and an entertainment area, perfect for hosting gatherings, and a lovely garden for kids to play.

The offers offers a generous upstairs loft-lounge area, with space for a home study.
The home includes, air conditioning in the...

Features

Pets Allowed Yes

Interior

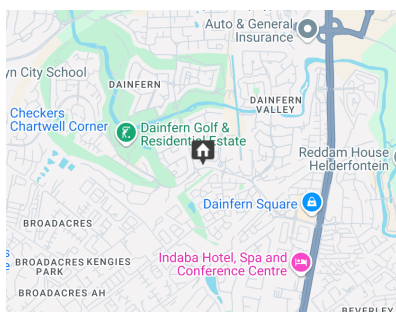
Bedrooms	3
Bathrooms	3.5
Recep. Rooms	3
Studies	1
Furnished	No

Exterior

Garages	2
Security	No
Dom. Accom.	1
Pool	Yes
Views	False

Sizes

Land Size	589m²
-----------	-------



<https://www.malherbex.com>