



MALHERBEX™
PROPERTY GROUP



Willie Malherbe
0834257174
willie@malherbex.com

Contact Head Office

011 7869364

Unit 1 Cyrus House (Building 13) Mulberry
Hill Office Park, Dainfern, Sandton, 2191

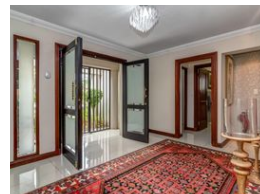
4 Bedroom House For Sale in Dainfern Golf Estate

UNDER OFFER



SOLE MANDATE

Web Ref RL1070



R5,950,000

4 4 2

Monthly Bond Repayment R59,403.60

Calculated over 20 years at 10.5% with no deposit.

Transfer Costs R512,478.00 **Bond Costs** R65,785.00

These calculations are only a guide. Please ask your conveyancer for exact calculations.

Monthly Levy R4,720

Modern Elegance Awaits You

Sole/Exclusive Mandate

Welcome to your dream home! This modern four-bedroom masterpiece, boasting en-suite bathrooms for every bedroom, is a symphony of style and comfort. Step into luxury living where meticulous design meets eco-friendly efficiency. Upon entering, experience seamless flow and a thoughtfully designed open-plan layout. The contemporary kitchen, complete with a separate scullery, effortlessly merges with the dining and formal lounge areas. The kitchen is a masterpiece, ensuring cooking is a delight. The open plan allows for easy interaction, while the separate scullery keeps the central kitchen pristine. Unwind in the spacious family lounge, enhanced by a gas fireplace, creating a warm and inviting atmosphere. The lounge extends to a patio featuring a built-in braai, overlooking a well-maintained garden and...

Features

Pets Allowed Yes

Interior

Bedrooms	4
Bathrooms	4
Kitchens	1
Recep. Rooms	4

Exterior

Garages	2
Dom. Accom.	1
Pool	Yes
Views	No

Sizes

Floor Size	373m ²
Land Size	713m ²



<https://www.malherbex.com>