



MALHERBEX™  
PROPERTY GROUP



**Willie Malherbe**  
0834257174  
willie@malherbex.com



**Dwayne Moffat**  
0680258263

dwayne@malherbex.com

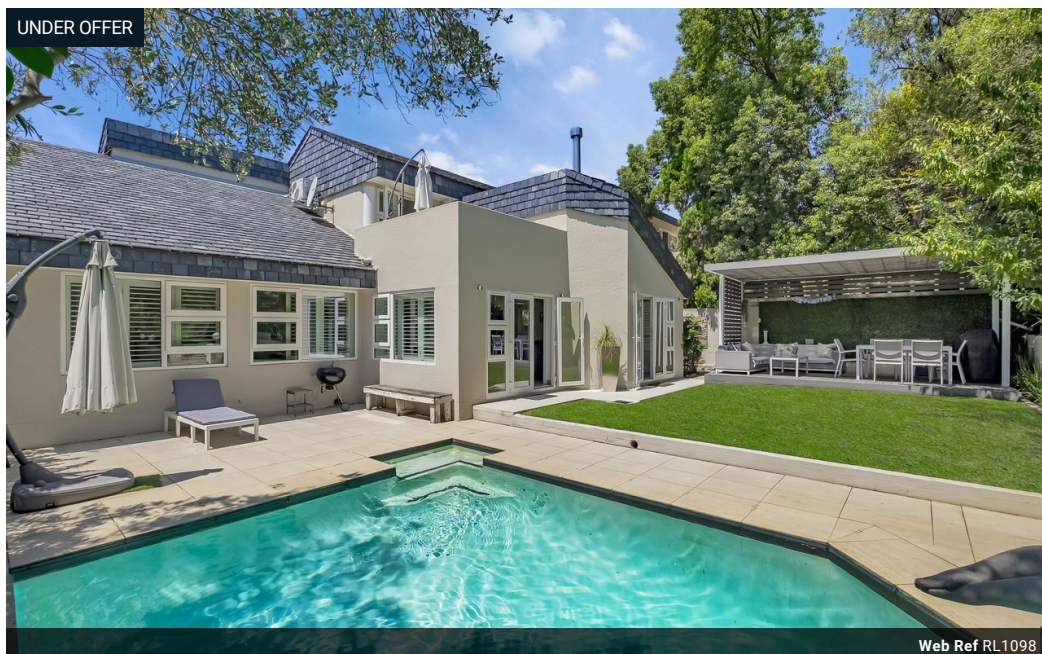
Contact Head Office

011 7869364

Unit 1 Cyrus House (Building 13) Mulberry  
Hill Office Park, Dainfern, Sandton, 2191

## 4 Bedroom House For Sale in Dainfern Golf Estate

UNDER OFFER



Web Ref RL1098



R5,950,000

🛏️ 4 🚿 3 🚗 2

**Monthly Bond Repayment** R60,406.12

Calculated over 20 years at 10.75% with no deposit.

**Transfer Costs** R512,307.00 **Bond Costs** R65,785.00

These calculations are only a guide. Please ask your conveyancer for exact calculations.

**Monthly Levy** R4,720

### Luxury Living at its Finest

A meticulously renovated, exquisite 4-bedroom home nestled within the prestigious Dainfern Golf Estate, boasting captivating fairway views and exudes sophistication and style.

Step into a world of elegance as you enter the heart of this residence, where a stunning hi-gloss white kitchen awaits, complete with a spacious center island, gas hob, and integrated appliances.

Seamlessly flowing into the dining room and lounge adorned with a cozy closed fireplace, this home is designed for effortless entertaining. Sliding doors beckon you to explore the manicured garden, entertainer's patio, and inviting swimming pool area, offering the perfect backdrop for outdoor gatherings.

Featuring 4 well-appointed bedrooms, each equipped with air conditioning and American shutters, along with a versatile mezzanine level adaptable to...

### Features

**Pets Allowed** Yes

#### Interior

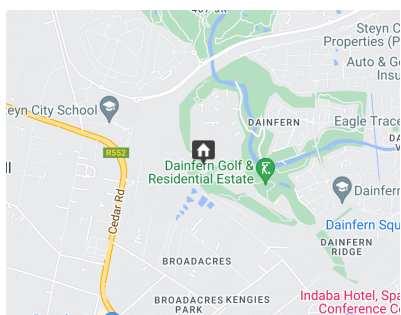
Bedrooms	4
Bathrooms	3
Kitchens	1
Recep. Rooms	2
Studies	1
Furnished	No

#### Exterior

Garages	2
Carports / Parkings	1
Security	No
Dom. Accom.	1
Pool	Yes
Views	False

#### Sizes

Floor Size	250m <sup>2</sup>
Land Size	408m <sup>2</sup>



<https://www.malherbex.com>