



MALHERBEX™
PROPERTY GROUP



Willie Malherbe
0834257174
willie@malherbex.com

Contact Head Office

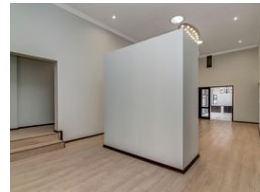
011 7869364

Unit 1 Cyrus House (Building 13) Mulberry
Hill Office Park, Dainfern, Sandton, 2191

3 Bedroom House For Sale in Dainfern Golf Estate



Web Ref RL1280



R5,500,000

🛏 3 🛁 2.5 🚗 2

Monthly Bond Repayment R54,910.89

Calculated over 20 years at 10.5% with no deposit.

Transfer Costs R462,978.00 **Bond Costs** R65,785.00

These calculations are only a guide. Please ask your conveyancer for exact calculations.

Monthly Levy R4,720

Asking R5 500 000 negotiable

Welcome to the epitome of secure living in the prestigious Dainfern Golf Estate. This newly renovated property seamlessly blends contemporary style with functionality, offering a truly exquisite living experience.

Step inside this open-plan haven, where three reception rooms effortlessly flow into one another, creating a harmonious space for both relaxation and entertainment. The property boasts three bedrooms, with the main bedroom featuring a private en suite, and an additional well-appointed bathroom to cater to the needs of the household. The study could be used as a 4th bedroom.

The heart of this home is the fully integrated kitchen, adorned with a newly fitted gas hob, making culinary adventures a delight. The open-plan dining room and living area provide a perfect setting for family gatherings and socializing. For...

Features

Pets Allowed Yes

Interior

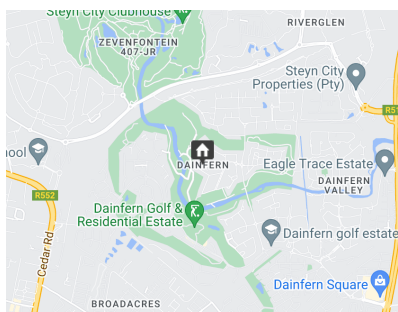
Bedrooms	3
Bathrooms	2.5
Kitchens	1
Recep. Rooms	3

Exterior

Garages	2
Security	Yes
Dom. Accom.	1
Pool	Yes

Sizes

Floor Size	515m ²
Land Size	1,077m ²



<https://www.malherbex.com>