



MALHERBEX™  
PROPERTY GROUP



Willie Malherbe  
0834257174  
willie@malherbex.com

Contact Head Office

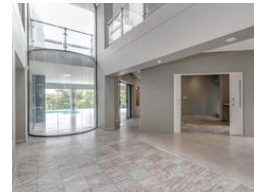
011 7869364

Unit 1 Cyrus House (Building 13) Mulberry  
Hill Office Park, Dainfern, Sandton, 2191

## 4 Bedroom House For Sale in Dainfern Golf Estate



Web Ref RL1304



R7,695,000

🛏️ 4 🛁 3.5 🚗 3

**Monthly Bond Repayment** R76,825.33

Calculated over 20 years at 10.5% with no deposit.

**Transfer Costs** R715,882.00 **Bond Costs** R75,285.00

These calculations are only a guide. Please ask your conveyancer for exact calculations.

**Monthly Levy** R4,720

### Exquisite Home in a Prime Position

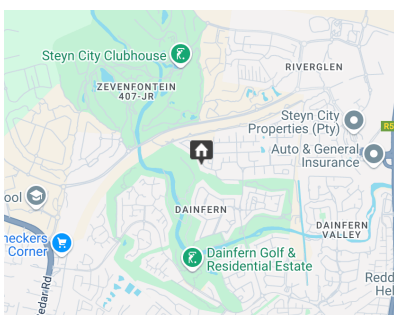
Experience the epitome of luxury living with this exquisite residence nestled alongside the 13th hole, offering uninterrupted vistas of the picturesque golf course. Radiating elegance and refinement, this home is ideal for both comfort and lavish entertaining.

The grandeur of the property is accentuated by its expansive windows, skylights, and soaring double-volume ceilings, bathing the interiors in abundant natural light. Boasting four bedrooms, three of which are located upstairs including a sumptuous primary en suite bedroom, and an additional en suite bedroom downstairs, the layout effortlessly caters to modern lifestyles. A study/home office is also situated on the upper level.

Seamlessly integrating indoor and outdoor living, the three reception rooms flow gracefully from the well-appointed kitchen with integrated...

### Features

Pets Allowed		Yes			
Interior		Exterior		Sizes	
Bedrooms	4	Garages	3	Floor Size	630m²
Bathrooms	3.5	Carports / Parkings	3	Land Size	1,041m²
Kitchens	1	Security	Yes		
Recep. Rooms	3	Dom. Accom.	1		
Studies	1	Pool	Yes		
Furnished	No	Views	False		



<https://www.malherbex.com>