



MALHERBEX[™]
PROPERTY GROUP



Willie Malherbe
0834257174
willie@malherbex.com

Contact Head Office

011 7869364

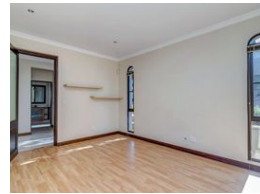
Unit 1 Cyrus House (Building 13) Mulberry
Hill Office Park, Dainfern, Sandton, 2191

4 Bedroom House For Sale in Dainfern Golf Estate

UNDER OFFER



Web Ref RL1335



R5,495,000

4 3 2

Monthly Bond Repayment R54,860.97

Calculated over 20 years at 10.5% with no deposit.

Transfer Costs R462,428.00 **Bond Costs** R65,785.00

These calculations are only a guide. Please ask your conveyancer for exact calculations.

Monthly Levy R4,720

Inviting Family Haven

EXCLUSIVE SOLE AGENT:

Investment Sale with rental income

No Transfer Duty

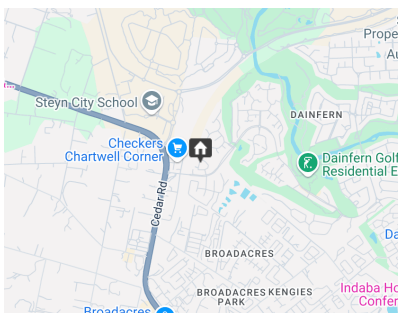
Discover the allure of this contemporary four-bedroom house nestled within a secure estate. Offering a serene and harmonious lifestyle for you and your loved ones, it features three full bathrooms, including a luxurious main en-suite. This residence ensures abundant space for the entire family.

Step into the inviting ground floor, where three reception rooms adorned with a warm gas fireplace create the perfect haven for relaxation after a bustling day. The kitchen boasts solid wood cabinetry, granite countertops, a walk-in pantry, and a separate laundry/scullery, providing both storage and practicality.

The main suite of this stunning home is equipped with a walk-in wardrobe and a lavish en-suite bathroom. Open the doors to a spacious covered...

Features

Pets Allowed		Yes			
Interior		Exterior		Sizes	
Bedrooms	4	Garages	2	Land Size	576m²
Bathrooms	3	Carports / Parkings	2		
Kitchens	1	Security	No		
Recep. Rooms	3	Dom. Accom.	1		
Furnished	No	Pool	Yes		
		Views	False		



<https://www.malherbex.com>