



MALHERBEX™
PROPERTY GROUP



Willie Malherbe
0834257174
willie@malherbex.com

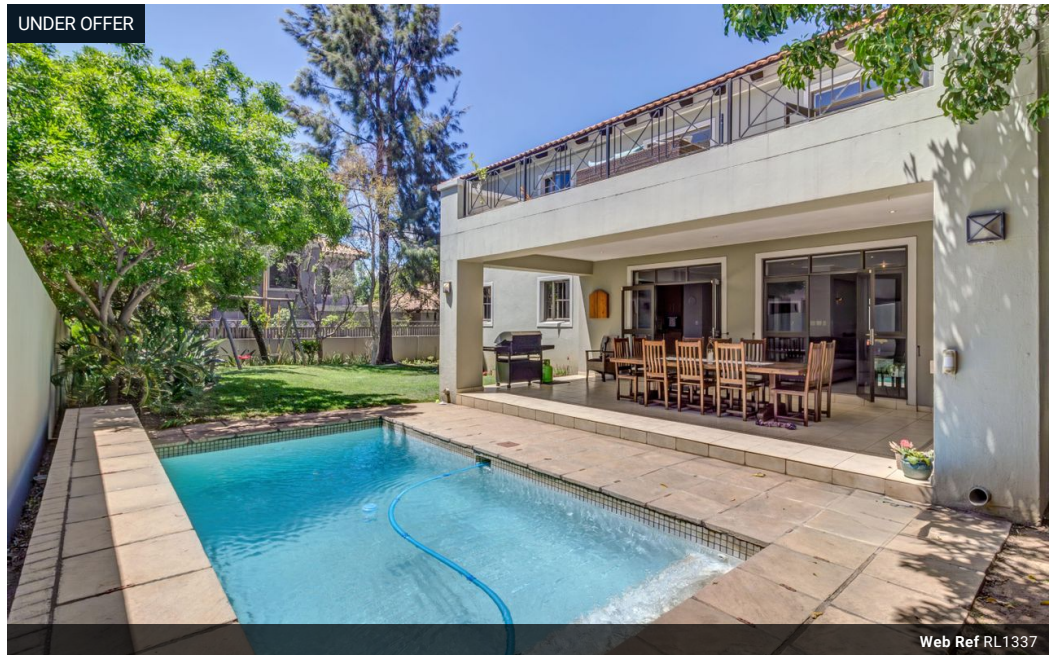
Contact Head Office

011 7869364

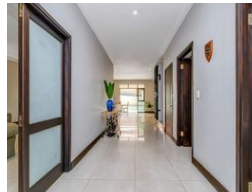
Unit 1 Cyrus House (Building 13) Mulberry
Hill Office Park, Dainfern, Sandton, 2191

4 Bedroom House For Sale in Dainfern Golf Estate

UNDER OFFER



Web Ref RL1337



R5,495,000

4 3 2

Monthly Bond Repayment R55,786.83

Calculated over 20 years at 10.75% with no deposit.

Transfer Costs R462,257.00 **Bond Costs** R65,785.00

These calculations are only a guide. Please ask your conveyancer for exact calculations.

Monthly Levy R4,720

4 Bedroom House For Sale in Dainfern Golf Estate

EXCLUSIVE SOLE AGENT

No Transfer Duty

Experience the charm of this modern four-bedroom house located in a secure estate designed to provide a tranquil and harmonious lifestyle for you and your family.

As you enter the welcoming ground floor, you are met by a warm gas fireplace, perfect for unwinding after a busy day. The kitchen comes equipped with solid wood cabinetry, granite countertops, a walk-in pantry, and a separate laundry/scullery, ensuring both functionality and storage.

With four bedrooms situated upstairs, the main suite is a highlight and features a walk-in wardrobe and a luxurious en-suite bathroom this home offers ample space for everyone. From here, you can access a spacious covered patio, ideal for entertaining while enjoying stunning views of the surroundings.

Step outside to discover a sparkling...

Features

Pets Allowed Yes

Interior

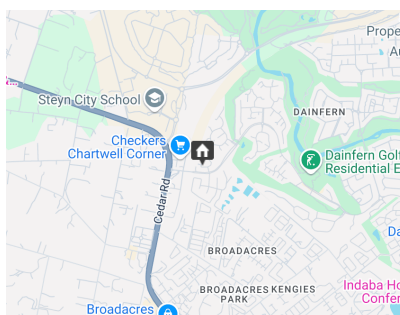
Bedrooms	4
Bathrooms	3
Kitchens	1
Recep. Rooms	3

Exterior

Garages	2
Carports / Parkings	2
Security	No
Dom. Accom.	1
Pool	Yes
Views	No

Sizes

Land Size	673m ²
-----------	-------------------



<https://www.malherbex.com>