



MALHERBEX™  
PROPERTY GROUP



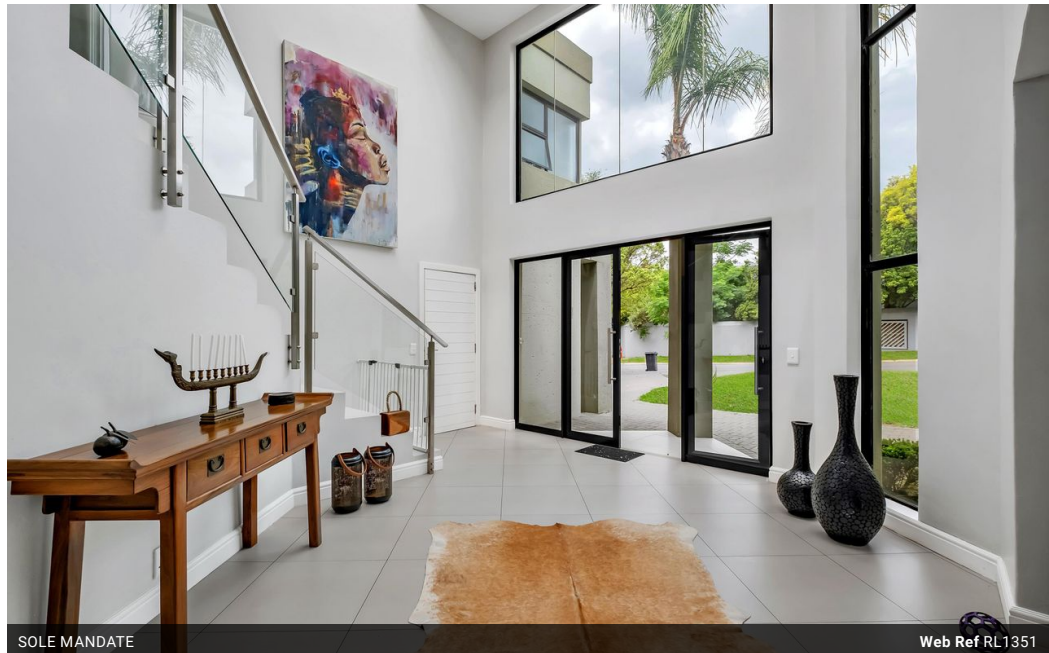
Willie Malherbe  
0834257174  
willie@malherbex.com

Contact Head Office

011 7869364

Unit 1 Cyrus House (Building 13) Mulberry  
Hill Office Park, Dainfern, Sandton, 2191

## 4 Bedroom House For Sale in Dainfern Golf Estate



SOLE MANDATE

Web Ref RL1351



R9,790,000

🛏 4 🚿 4.5 🚗 2

**Monthly Bond Repayment** R99,390.91

Calculated over 20 years at 10.75% with no deposit.

**Transfer Costs** R957,576.00 **Bond Costs** R84,785.00

These calculations are only a guide. Please ask your conveyancer for exact calculations.

**Monthly Levy** R4,720

Discover Perfection in Every Detail of This Exquisite Home

SOLE EXCLUSIVE MANDATE

This beautiful contemporary property will captivate the discerning buyer, offering flawless design and functionality at every turn. Step into a spacious light-filled entrance hall with large window spaces, that sets the tone for what follows. Each room is designed with care, blending aesthetics with practicality to create a welcoming and functional living environment.

Heading upstairs, ascend the grand staircase to discover the pyjama lounge and bedrooms with natural light flowing through these areas. Four expansive, en-suite bedrooms with modern bathrooms. The large pyjama lounge is the perfect retreat for warm evenings or early morning coffees. Every bedroom is designed for comfort, offering a private oasis for all members of the family, both comfort and privacy. The main bedroom has a walk-in...

### Features

**Pets Allowed** Yes

#### Interior

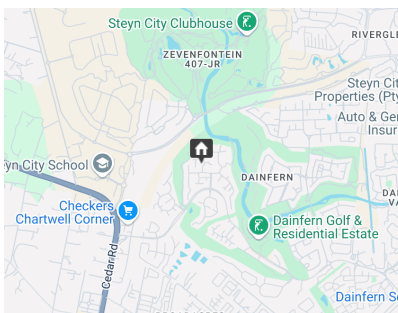
Bedrooms	4
Bathrooms	4.5
Kitchens	1
Recep. Rooms	3
Studies	1

#### Exterior

Garages	2
Security	Yes
Dom. Accom.	1
Pool	Yes

#### Sizes

Floor Size	557m <sup>2</sup>
Land Size	916m <sup>2</sup>



<https://www.malherbex.com>