



MALHERBEX™  
PROPERTY GROUP



Willie Malherbe  
0834257174  
willie@malherbex.com

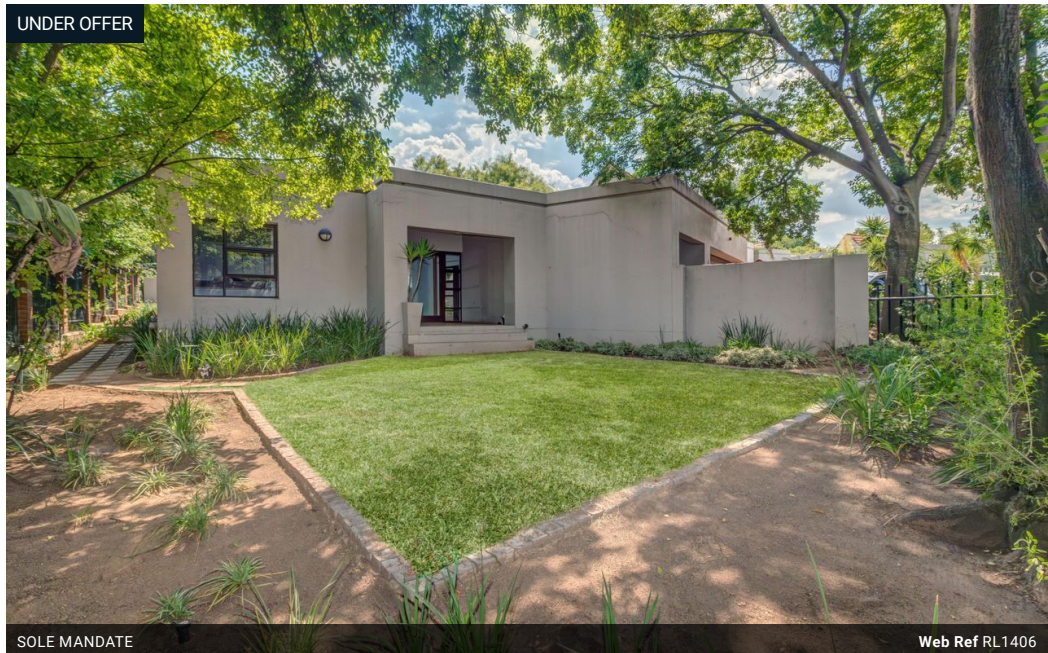
Contact Head Office

011 7869364

Unit 1 Cyrus House (Building 13) Mulberry  
Hill Office Park, Dainfern, Sandton, 2191

## 3 Bedroom House For Sale in Dainfern Golf Estate

UNDER OFFER



SOLE MANDATE

Web Ref RL1406



R3,950,000

3 2 2

Monthly Bond Repayment R40,771.44

Calculated over 20 years at 11% with no deposit.

Transfer Costs R275,550.00 Bond Costs R51,610.00

These calculations are only a guide. Please ask your conveyancer for exact calculations.

### Renovators dream

Exclusive Agent: Truly a renovator's dream. Turn this into a great starter, retirement home, or even a lockup, and go home for the traveling corporate. The home consists of:

Open-plan lounge dining area.

Large covered patio area with built-in braai overlooking the garden.

Entrance hall.

Spacious family room that leads onto separate patio.

Three bedrooms and two bathrooms, with the main bedroom offering high ceilings, a walkthrough cupboard, and an ensuite bathroom.

Double automated garage

Staff accommodation

Use this blank canvas to paint your own story.

Call now for a private viewing.

Malherbex Property Group endeavors to give you the most holistic property buying and selling advice. Contact us today to speak to one of our area specialists

### Features

Pets Allowed Yes

#### Interior

Bedrooms 3

Bathrooms 2

Kitchens 1

Recep. Rooms 2

#### Exterior

Garages 2

Dom. Accom. 1

Pool No

#### Sizes

Land Size 625m<sup>2</sup>

<https://www.malherbex.com>