



MALHERBEX[™]
PROPERTY GROUP



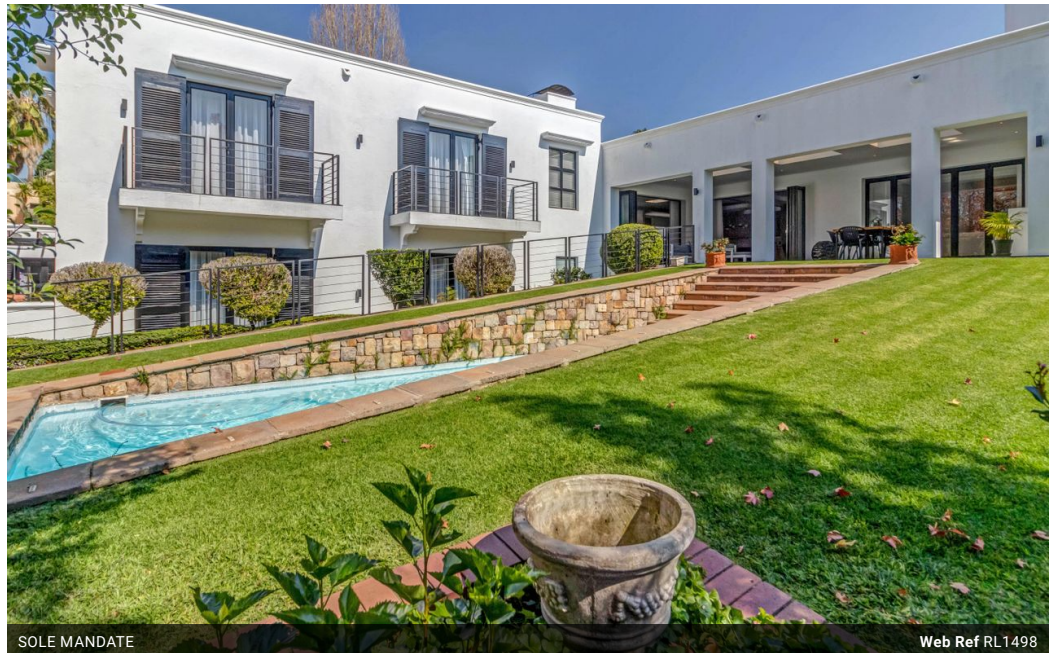
Willie Malherbe
0834257174
willie@malherbex.com

Contact Head Office

011 7869364

Unit 1 Cyrus House (Building 13) Mulberry
Hill Office Park, Dainfern, Sandton, 2191

4 Bedroom House For Sale in Dainfern Golf Estate



SOLE MANDATE

Web Ref RL1498



R16,995,000

4 4 5

Monthly Bond Repayment R172,538.16

Calculated over 20 years at 10.75% with no deposit.

Transfer Costs R1,865,334.00 **Bond Costs** R118,035.00

These calculations are only a guide. Please ask your conveyancer for exact calculations.

Monthly Levy R4,720

Modern Elegance Meets Contemporary Design

EXCLUSIVE SOLE AGENT

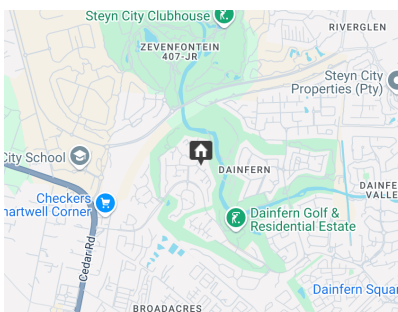
We are delighted to present this beautifully renovated family home, a property that makes an unforgettable impression from the moment you walk through the door. Set on an expansive 1,700sqm stand, this residence has been thoughtfully designed to meet the lifestyle needs of the modern family, offering both luxury and comfort in equal measure.

Renovated by one of South Africa's premier interior design and construction firms, the home showcases a seamless blend of timeless elegance and contemporary flair. Clean lines, high-end finishes, and a harmonious mix of polished screed and oak flooring set the tone for sophisticated yet relaxed living.

The heart of the home is the spacious, fully equipped designer kitchen, featuring top-of-the-line appliances and a generous scullery. Adjacent is a welcoming TV...

Features

Pets Allowed		Yes			
Interior				Exterior	
Bedrooms	4			Garages	5
Bathrooms	4			Security	No
Kitchens	1			Dom. Accom.	1
Recep. Rooms	3			Pool	Yes
Studies	1			Sizes	
				Floor Size	722m ²
				Land Size	1,680m ²



<https://www.malherbex.com>