



MALHERBEX™  
PROPERTY GROUP



Willie Malherbe  
0834257174  
willie@malherbex.com

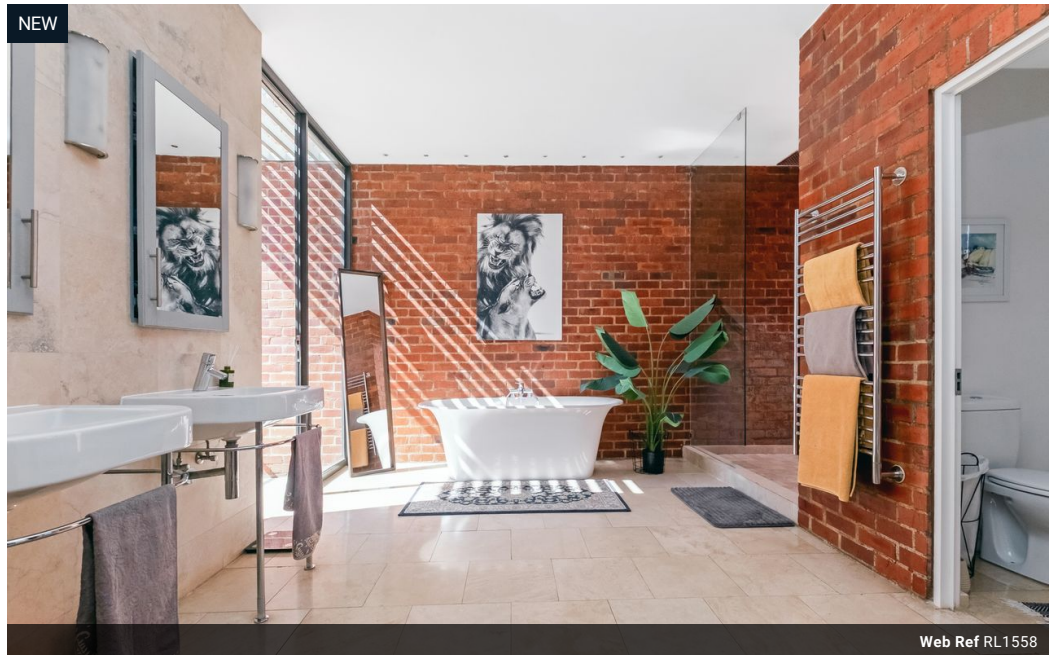
Contact Head Office

011 7869364

Unit 1 Cyrus House (Building 13) Mulberry  
Hill Office Park, Dainfern, Sandton, 2191

## 4 Bedroom House For Sale in Dainfern Golf Estate

NEW



Web Ref RL1558



R11,200,000

4 4.5 2

**Monthly Bond Repayment** R111,818.55

Calculated over 20 years at 10.5% with no deposit.

**Transfer Costs** R1,124,573.00 **Bond Costs** R94,285.00

These calculations are only a guide. Please ask your conveyancer for exact calculations.

**Monthly Levy** R4,720

### Architectural Sophistication meets Industrial Contemporary

A striking expression of architectural sophistication, this residence effortlessly marries industrial contemporary design with refined, livable comfort. Clean lines, raw textures, and bold finishes come together in a home that feels both cutting-edge and inviting. Designed for those who appreciate style without compromising on warmth or functionality, this exceptional property offers a unique living experience in a setting that is as inspiring as it is practical.

Ideal for both stylish entertaining and relaxed everyday living, the expansive open-plan lounge and dining area serves as the heart of this remarkable residence. Framed by floor-to-ceiling glass doors, this elegant space opens seamlessly onto a covered patio, complete with a wood-burning fireplace. Overlooking the swimming pool and a landscaped, low-maintenance...

### Features

**Pets Allowed** Yes

#### Interior

Bedrooms	4
Bathrooms	4.5
Kitchens	1
Recep. Rooms	3
Studies	1
Furnished	No

#### Extras

Irrigation System

#### Exterior

Garages	2
Carports / Parkings	1
Security	No
Dom. Accom.	1
Pool	Yes
Views	False

#### Sizes

Floor Size	550m²
Land Size	936m²