



MALHERBEX™
PROPERTY GROUP



Willie Malherbe
0834257174
willie@malherbex.com

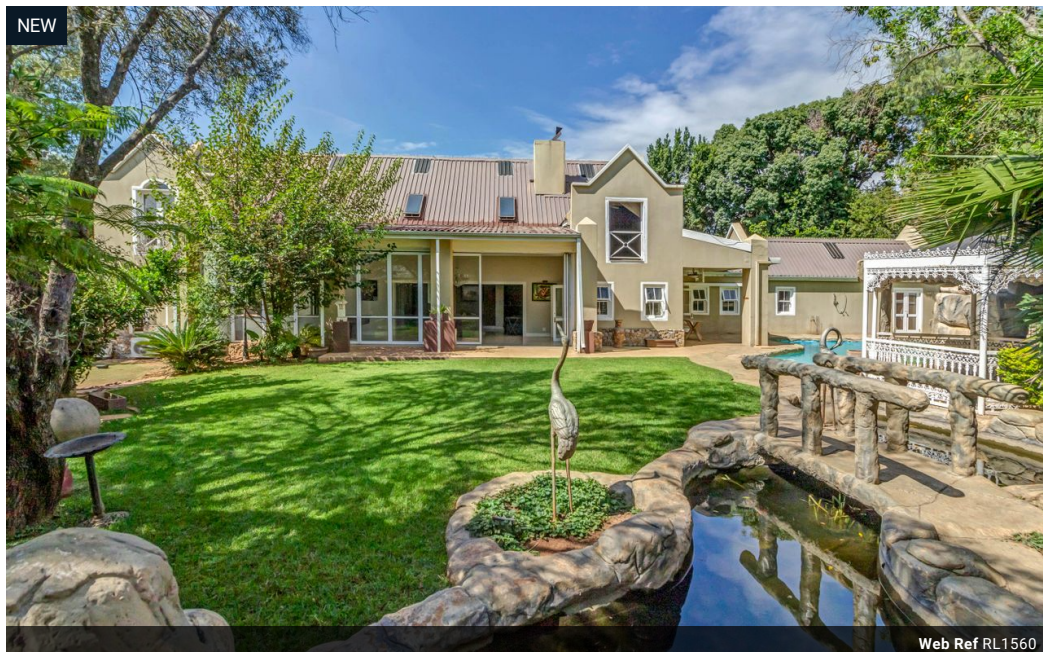
Contact Head Office

011 7869364

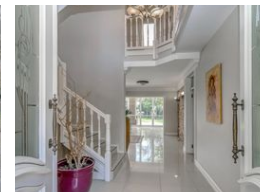
Unit 1 Cyrus House (Building 13) Mulberry
Hill Office Park, Dainfern, Sandton, 2191

4 Bedroom House For Sale in Dainfern Golf Estate

NEW



Web Ref RL1560



R5,600,000

4 3.5 2

Monthly Bond Repayment R55,909.27

Calculated over 20 years at 10.5% with no deposit.

Transfer Costs R473,978.00 **Bond Costs** R65,785.00

These calculations are only a guide. Please ask your conveyancer for exact calculations.

Monthly Levy R4,720

Tranquil Living in a Private Cul-de-Sac Setting

JOINT SOLE MANDATE:

Nestled in a quiet cul-de-sac on a generously sized stand, this inviting home is introduced by a beautifully landscaped front garden that sets the tone for what's inside. The open-plan living spaces are seamlessly connected to a well-appointed, classic-style kitchen with ample room for everyday living and entertaining.

Stack-away doors open to a serene back garden featuring a rock pool, entertainment area, putting green, and lush greenery – perfect for relaxed outdoor living. The residence offers four spacious bedrooms, three of which are en-suite, providing comfort and privacy for the whole family.

Additional features include a guest cloakroom, dedicated study, staff accommodation, air conditioning, borehole, and more, all designed for convenient and comfortable living.

If you're seeking a private...

Features

Pets Allowed Yes

Interior

| | |
|--------------|-----|
| Bedrooms | 4 |
| Bathrooms | 3.5 |
| Kitchens | 1 |
| Recep. Rooms | 3 |
| Studies | 1 |
| Furnished | No |

Exterior

| | |
|---------------------|-------|
| Garages | 2 |
| Carports / Parkings | 1 |
| Security | No |
| Dom. Accom. | 1 |
| Pool | Yes |
| Views | False |

Sizes

| | |
|------------|---------------------|
| Floor Size | 567m ² |
| Land Size | 1,259m ² |