



MALHERBEX™
PROPERTY GROUP



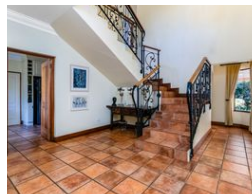
Willie Malherbe
0834257174
willie@malherbex.com

Contact Head Office

011 7869364

Unit 1 Cyrus House (Building 13) Mulberry
Hill Office Park, Dainfern, Sandton, 2191

5 Bedroom House For Sale in Dainfern Golf Estate



R6,500,000

🛏 5 🛁 4.5 🚗 3

Monthly Bond Repayment R64,894.69

Calculated over 20 years at 10.5% with no deposit.

Transfer Costs R578,970.00 **Bond Costs** R70,535.00

These calculations are only a guide. Please ask your conveyancer for exact calculations.

Monthly Levy R4,720

Spacious Family Home in a Prime Position

Designed with family living in mind, the home combines generous proportions with thoughtful features to create a welcoming and functional living environment. Perfectly positioned on a corner stand beside a tranquil park and just a short stroll from the Dainfern Golf Estate clubhouse, this beautifully maintained residence offers exceptional space, comfort, and versatility.

Upon entering the home, you're welcomed by a light-filled entrance hall that leads into a series of spacious and well-connected living areas. To the left, the formal lounge invites you to relax beside a gas fireplace, while the sunny family room, complete with a built-in wine cellar, creates a more informal space for daily living. Straight ahead, an elegant dining room opens onto a central atrium featuring a tranquil water feature, bringing a touch of nature...

Features

Pets Allowed Yes

Interior

Bedrooms	5
Bathrooms	4.5
Kitchens	1
Recep. Rooms	2
Studies	1
Furnished	No

Exterior

Garages	3
Carports / Parkings	2
Security	Yes
Dom. Accom.	1
Pool	Yes
Views	True

Sizes

Land Size	964m²
-----------	-------

Extras

Staff Quarters Domestic Rooms