



MALHERBEX<sup>™</sup>  
PROPERTY GROUP



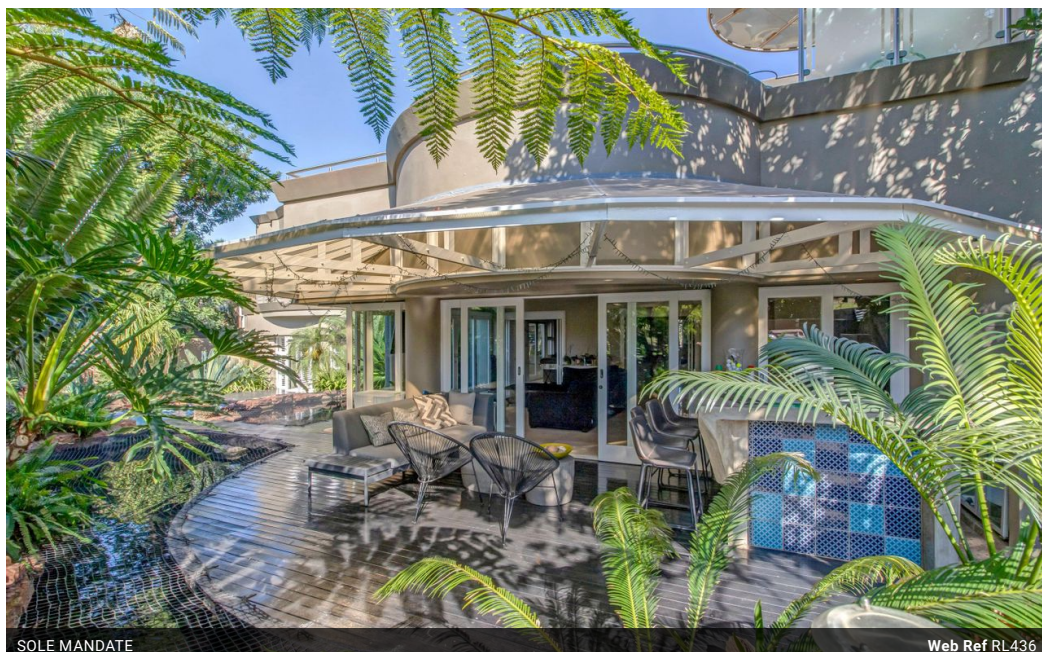
Willie Malherbe  
0834257174  
willie@malherbex.com

Contact Head Office

011 7869364

Unit 1 Cyrus House (Building 13) Mulberry  
Hill Office Park, Dainfern, Sandton, 2191

## 4 Bedroom House For Sale in Dainfern Golf Estate



SOLE MANDATE

Web Ref RL436



R12,500,000

4 4.5 3

**Monthly Bond Repayment** R124,797.49

Calculated over 20 years at 10.5% with no deposit.

**Transfer Costs** R1,273,036.00 **Bond Costs** R99,035.00

These calculations are only a guide. Please ask your conveyancer for exact calculations.

**Monthly Levy** R4,720

### Golf course contemporary home

**EXCLUSIVE SOLE AGENT:** Set on the golf course with fairway views, this contemporary home blends style, contemporary lines, and top-quality finishes with the utmost privacy.

The house offers everything the ultimate entertainer dreams of: three inter-leading lounges, sweeping outside patio with entertainment bar, imported modern Italian kitchen, large entertainment/cinema room, and so much more. The home welcomes you through a glass front door with views towards the koi ponds and swimming pool. Two formal lounges with the family lounge opening onto the swimming pool and bar area with koi ponds and a private garden to provide the backdrop. Imported Italian kitchen with centre island offers sliding doors covering the working areas and appliances, sporting clean lines, and styling finishes. The work-from-home office is currently...

### Features

**Pets Allowed** Yes

#### Interior

Bedrooms	4
Bathrooms	4.5
Kitchens	1
Recep. Rooms	5
Studies	1
Furnished	No

#### Exterior

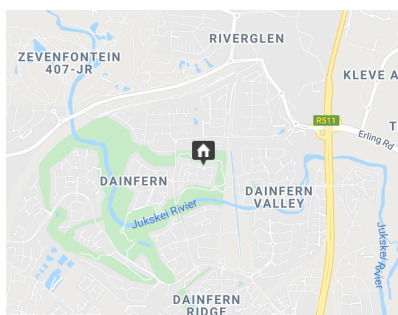
Garages	3
Carports / Parkings	3
Security	No
Dom. Accom.	1
Pool	Yes
Views	True

#### Sizes

Floor Size	558m <sup>2</sup>
Land Size	931m <sup>2</sup>

#### Extras

Generator, koi pond, aquapol system



<https://www.malherbex.com>