



MALHERBEX™
PROPERTY GROUP



Willie Malherbe
0834257174
willie@malherbex.com

Contact Head Office

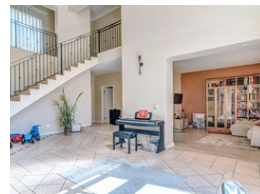
011 7869364

Unit 1 Cyrus House (Building 13) Mulberry
Hill Office Park, Dainfern, Sandton, 2191

4 Bedroom House For Sale in Dainfern Golf Estate



Web Ref RL450



R6,900,000

4 4 4

Monthly Bond Repayment R68,888.21

Calculated over 20 years at 10.5% with no deposit.

Transfer Costs R622,970.00 **Bond Costs** R70,535.00

These calculations are only a guide. Please ask your conveyancer for exact calculations.

Monthly Levy R4,720

Elegant North-Facing Home in a Tranquil Estate

Discover this beautifully designed home featuring generous proportions, soaring ceilings, and a seamless open-plan layout. Nestled in a peaceful part of the estate, it's just a short walk to the pavilion, a serene dam, a children's play park, and scenic walking paths.

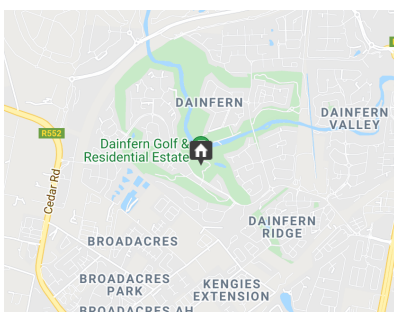
Property Features:

4 Spacious Bedrooms
4 Large Garages - with potential to convert into an additional bedroom or cottage
2 Lounges
Elegant Dining Room
Covered Patio Overlooking a Sparkling Pool
Open-Plan Kitchen with Scullery
Private Home Office
Staff Accommodation
Stylish Wooden & Tiled Flooring

Don't miss out on this exceptional home! Call now to arrange your private viewing.

Features

Pets Allowed		Yes			
Interior		Exterior		Sizes	
Bedrooms	4	Garages	4	Floor Size	503m²
Bathrooms	4	Security	Yes	Land Size	1,011m²
Kitchens	1	Dom. Accom.	1		
Recep. Rooms	3	Pool	Yes		
Studies	1	Views	True		
Furnished	No				



<https://www.malherbex.com>