



MALHERBEX™
PROPERTY GROUP



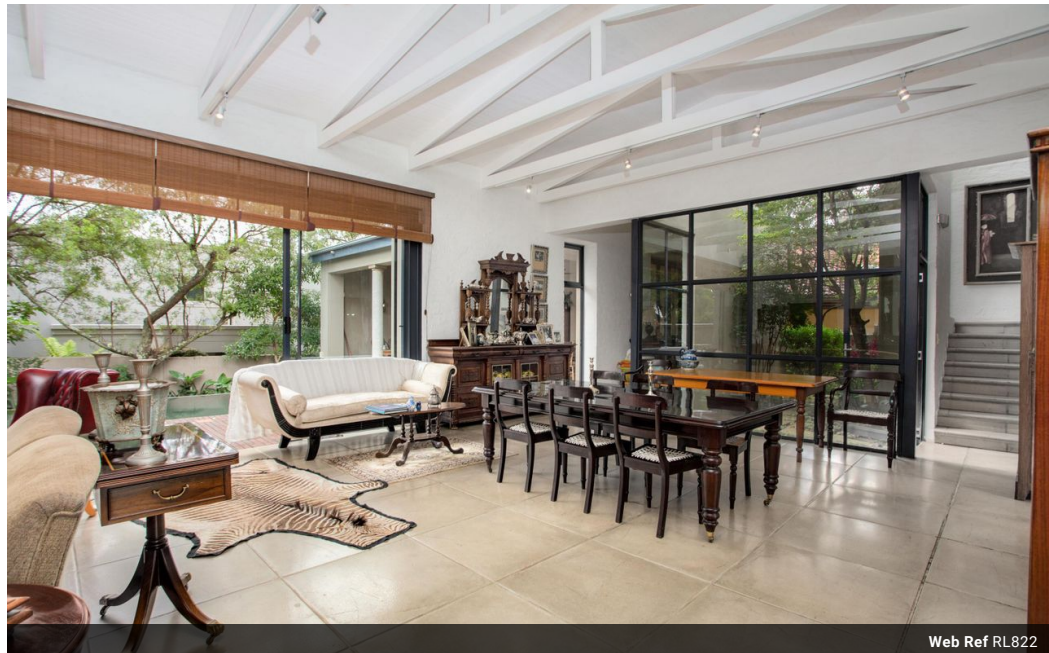
Willie Malherbe
0834257174
willie@malherbex.com

Contact Head Office

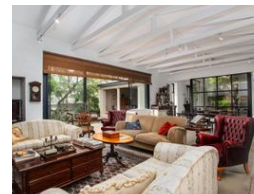
011 7869364

Unit 1 Cyrus House (Building 13) Mulberry
Hill Office Park, Dainfern, Sandton, 2191

3 Bedroom House For Sale in Dainfern Golf Estate



Web Ref RL822



R6,500,000

3 3 2

Monthly Bond Repayment R64,894.69

Calculated over 20 years at 10.5% with no deposit.

Transfer Costs R578,970.00 **Bond Costs** R70,535.00

These calculations are only a guide. Please ask your conveyancer for exact calculations.

Monthly Levy R4,720

Home with character and charm in Dainfern Golf estate

This gem has so much potential and is situated in a quiet cul-de-sac in the well-established Willowgrove Village in Dainfern Golf estate and uniquely designed to be one of the different styled homes in Dainfern, with high ceilings, white exposed beams, and plenty large windows, allowing natural light flowing through this lovely home. Beautifully tucked away with total privacy and established trees in this sought-after Dainfern Golf Estate.

Spacious proportions, with an open plan family room, dining room, and a wood-burning fireplace, for cozy cold family evenings together. The reception areas have large sliding windows and doors to the patio and outside entertainment area, with a braai area on the double-sized patio.

The kitchen is beautifully finished with granite countertops, a center island, a gas hob, a Smeg oven, and a...

Features

Pets Allowed Yes

Interior

Bedrooms	3
Bathrooms	3
Kitchens	1
Recep. Rooms	2
Studies	1
Furnished	No

Exterior

Garages	2
Carports / Parkings	2
Security	Yes
Dom. Accom.	1
Pool	Yes
Views	False

Sizes

Floor Size	360m²
Land Size	807m²



<https://www.malherbex.com>