



MALHERBEX™
PROPERTY GROUP



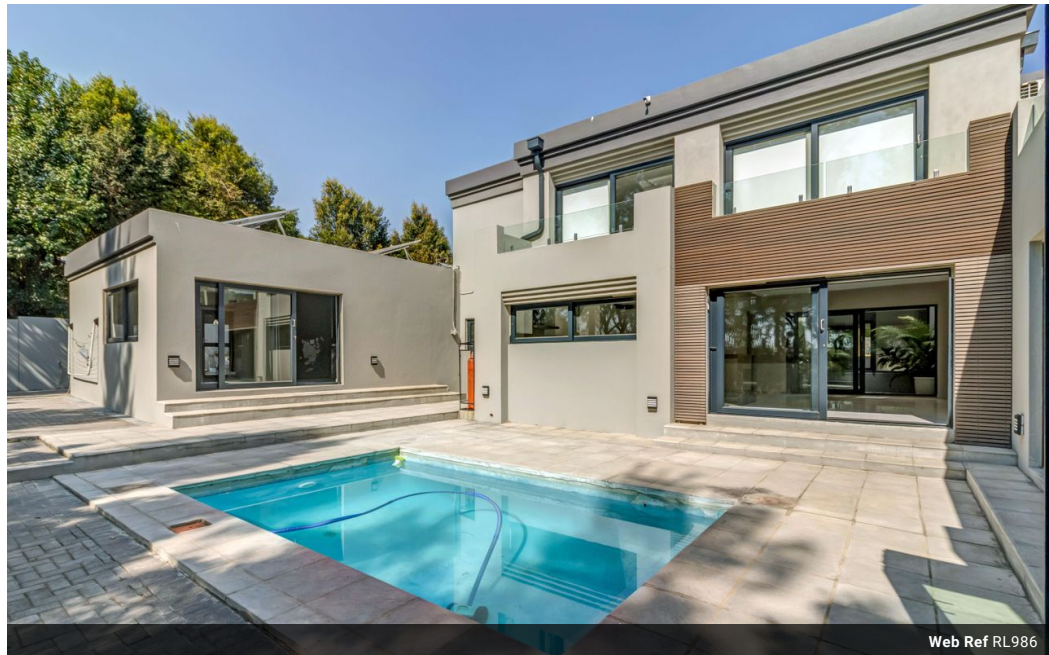
Willie Malherbe
0834257174
willie@malherbex.com

Contact Head Office

011 7869364

Unit 1 Cyrus House (Building 13) Mulberry
Hill Office Park, Dainfern, Sandton, 2191

5 Bedroom House For Sale in Dainfern Golf Estate



Web Ref RL986



R7,900,000

🛏 5 🛁 5.5 🚗 2

Monthly Bond Repayment R78,872.01

Calculated over 20 years at 10.5% with no deposit.

Transfer Costs R738,432.00 **Bond Costs** R75,285.00

These calculations are only a guide. Please ask your conveyancer for exact calculations.

Monthly Levy R4,720

Exquisite in design, space and grandeur

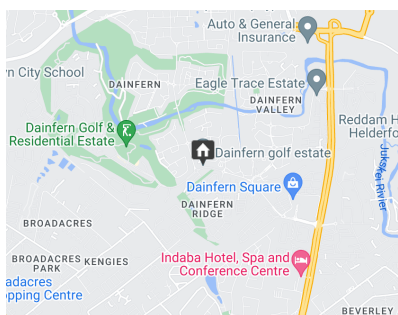
Presenting an exquisite contemporary haven within the prestigious enclave of Dainfern Golf Estate. This newly-renovated masterpiece awaits, inviting you to experience luxury living at its finest. Poised with a captivating north-facing aspect overlooking a lush greenbelt, this modern marvel redefines gracious living.

Step into a realm where open-plan opulence merges seamlessly with premium aesthetics. Immerse yourself in a symphony of fine design, where marble surfaces grace both countertops and floors, elevating every moment to an experience of elegance.

As you enter, a vast entertainment expanse unfolds, bathed in natural light that pours through expansive aluminium sliding doors and windows. The ambiance is a marriage of modernity and comfort, bathed in a palette of contemporary hues that evoke serenity throughout....

Features

Pets Allowed		Yes			
Interior		Exterior		Sizes	
Bedrooms	5	Garages	2	Floor Size	599m ²
Bathrooms	5.5	Carports / Parkings	1	Land Size	1,004m ²
Recep. Rooms	3	Pool	Yes		
Studies	1				



<https://www.malherbex.com>