



MALHERBEX™
PROPERTY GROUP



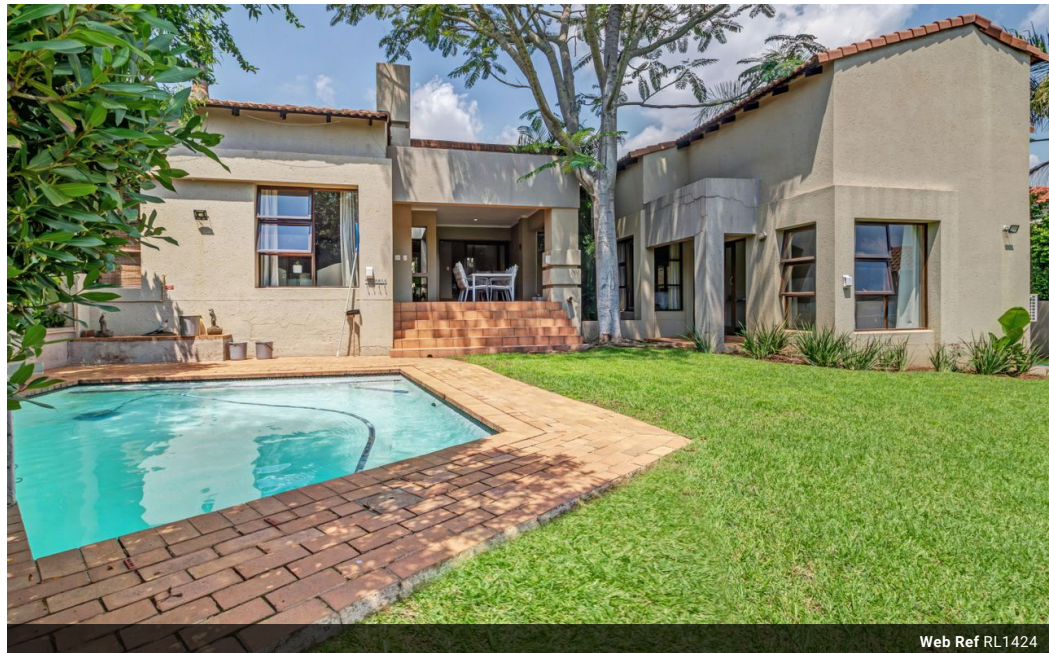
Willie Malherbe
0834257174
willie@malherbex.com

Contact Head Office

011 7869364

Unit 1 Cyrus House (Building 13) Mulberry
Hill Office Park, Dainfern, Sandton, 2191

3 Bedroom Freehold For Sale in Dainfern Ridge Estate



Web Ref RL1424



R4,495,000

3 2.5 2

Monthly Bond Repayment R45,634.54

Calculated over 20 years at 10.75% with no deposit.

Transfer Costs R342,459.00 **Bond Costs** R57,265.00

These calculations are only a guide. Please ask your conveyancer for exact calculations.

Monthly Levy R2,990

Charming Home in Secure Dainfern Ridge Estate - A Perfect Entry Opportunity

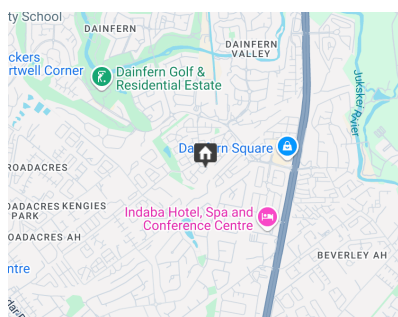
Discover the comfort and security of Dainfern Ridge with this inviting three bedroomed single story home, perfectly positioned on an 849sqm stand. Designed for both functionality and warmth, the home boasts a family room off the kitchen and formal lounge and dining area, separated by a dual gas fireplace leading to the patio and garden. The well-equipped kitchen includes a gas hob, generous pantry, and a handy study nook adjacent to the bedrooms, ideal for remote work.

Flooded with natural light, this residence offers three well-sized bedrooms, two bathrooms, and a convenient guest cloakroom. The main bedroom features an en-suite bathroom with direct access to the garden.

Step outside to a sun-drenched patio with a built-in braai, overlooking a beautifully large landscaped garden and sparkling swimming pool. Additional...

Features

Pets Allowed		Yes	
Interior		Exterior	
Bedrooms	3	Garages	2
Bathrooms	2.5	Security	Yes
Kitchens	1	Dom. Accom.	1
Recep. Rooms	3	Pool	Yes
Studies	1		
Sizes		Land Size	
		849m²	



<https://www.malherbex.com>