



MALHERBEX™
PROPERTY GROUP



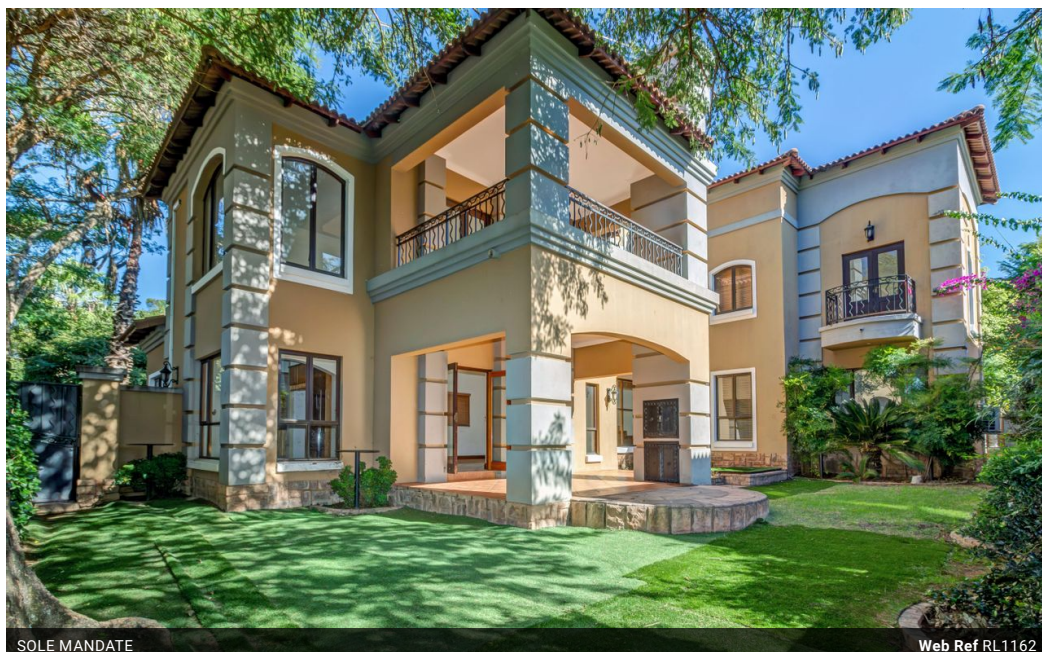
Willie Malherbe
0834257174
willie@malherbex.com

Contact Head Office

011 7869364

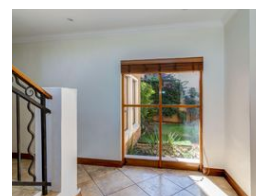
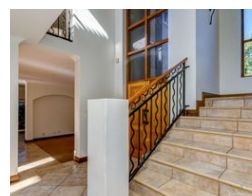
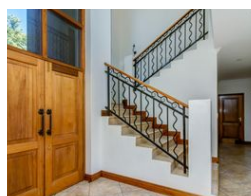
Unit 1 Cyrus House (Building 13) Mulberry
Hill Office Park, Dainfern, Sandton, 2191

6 Bedroom House For Sale in Dainfern Ridge Estate



SOLE MANDATE

Web Ref RL1162



R4,790,000

🛏 6 🚿 5 🚗 2

Monthly Bond Repayment R48,629.47

Calculated over 20 years at 10.75% with no deposit.

Transfer Costs R377,077.00 **Bond Costs** R59,150.00

These calculations are only a guide. Please ask your conveyancer for exact calculations.

Monthly Levy R2,990

6 Bedroom home in Dainfern Ridge

SOLE EXCLUSIVE MANDATE

Welcome to your slice of paradise in Dainfern Ridge.

This exceptional property offers not only a stunning three-bedroom home but also three charming cottages, providing unparalleled comfort and endless possibilities. Located in the prestigious Dainfern Ridge Estate, this property offers a lifestyle of luxury and convenience, with easy access to amenities, schools, and recreational facilities.

As you step into the main residence, you'll be greeted by a spacious lounge and open-plan dining room, leading effortlessly to a covered patio and low-maintenance garden, perfect for entertaining or simply unwinding in the serenity of nature.

The functional kitchen is a chef's delight, boasting modern amenities and ample space for culinary creations. Downstairs, two bedrooms share a beautifully appointed...

Features

Pets Allowed Yes

Interior

Bedrooms	6
Bathrooms	5
Kitchens	4
Recep. Rooms	3

Exterior

Garages	2
Carports / Parkings	2
Security	Yes
Dom. Accom.	1
Pool	No
Views	Yes

Sizes

Floor Size	320m²
Land Size	646m²



<https://www.malherbex.com>