



MALHERBEX™  
PROPERTY GROUP



Willie Malherbe  
0834257174  
willie@malherbex.com

Contact Head Office

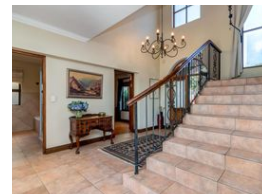
011 7869364

Unit 1 Cyrus House (Building 13) Mulberry  
Hill Office Park, Dainfern, Sandton, 2191

## 3 Bedroom House For Sale in Dainfern Ridge Estate



Web Ref RL1240



R5,400,000

3 3 2

**Monthly Bond Repayment** R54,822.36

Calculated over 20 years at 10.75% with no deposit.

**Transfer Costs** R451,807.00 **Bond Costs** R65,785.00

These calculations are only a guide. Please ask your conveyancer for exact calculations.

**Monthly Levy** R2,990

### Exceptional Waterfront Living in Dainfern Ridge

Embrace and discover the rare opportunity to own a captivating waterfront property, nestled in the esteemed residential estate of Dainfern Ridge. Rarely available, this residence epitomizes luxury living with a seamless blend of tranquility and natural beauty.

This cherished character residence seamlessly blends indoor and outdoor living, offering a serene ambiance amidst natural splendors. Positioned to capture stunning sunrises and tranquil waterfront views, the setting is enriched by vibrant birdlife, creating a picturesque retreat.

Step inside the double-volume entrance to discover spacious living areas bathed in natural light. The formal lounge, dining room, and family room harmoniously connect, ideal for intimate gatherings and grand social affairs. Flexibility abounds, with the option to transform the formal...

### Features

Pets Allowed		Yes			
Interior				Sizes	
Bedrooms	3			Floor Size	394m <sup>2</sup>
Bathrooms	3			Land Size	850m <sup>2</sup>
Kitchens	1				
Recep. Rooms	3				
Studies	1				
Exterior					
Garages	2				
Security	Yes				
Dom. Accom.	1				
Pool	No				



<https://www.malherbex.com>