



MALHERBEX™
PROPERTY GROUP



Willie Malherbe
0834257174
willie@malherbex.com

Contact Head Office

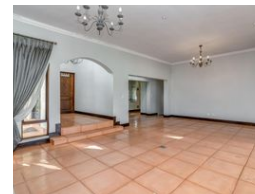
011 7869364

Unit 1 Cyrus House (Building 13) Mulberry
Hill Office Park, Dainfern, Sandton, 2191

3 Bedroom House For Sale in Dainfern Ridge Estate



Web Ref RL906



R4,595,000

🛏 3 🛁 2.5 🚗 2

Monthly Bond Repayment R47,429.06

Calculated over 20 years at 11% with no deposit.

Transfer Costs R353,459.00 **Bond Costs** R57,265.00

These calculations are only a guide. Please ask your conveyancer for exact calculations.

Monthly Levy R2,990

Appealing, single storey family home with solar

This home is ideally positioned on an 845 sqm elevated stand in the popular and secure Dainfern Ridge Estate.

Enter through a bright entrance hall to an open-plan living area with a wood fireplace and stacking doors opening to a large covered patio with a delightful view giving a sense of openness and tranquil space.

The kitchen has recently been fitted with a highly efficient induction hob and the scullery allows for three appliances.

Three sunny, generously sized bedrooms, m.e.s. with a walk-in dresser, two bathrooms, a guest cloakroom, and a domestic helper's room make this a comfortable family home.

All offers will be presented.

A state-of-the-art solar and backup power system is a huge advantage and convenience of this property.

Council-approved plans for various extensions of the property are in...

Features

Pets Allowed Yes

Interior

| | |
|--------------|-----|
| Bedrooms | 3 |
| Bathrooms | 2.5 |
| Recep. Rooms | 2 |
| Studies | 1 |
| Furnished | No |

Exterior

| | |
|-------------|-----|
| Garages | 2 |
| Security | Yes |
| Dom. Accom. | 1 |
| Pool | Yes |
| Views | Yes |

Sizes

| | |
|------------|-------------------|
| Floor Size | 280m ² |
| Land Size | 845m ² |



<https://www.malherbex.com>