



MALHERBEX™  
PROPERTY GROUP



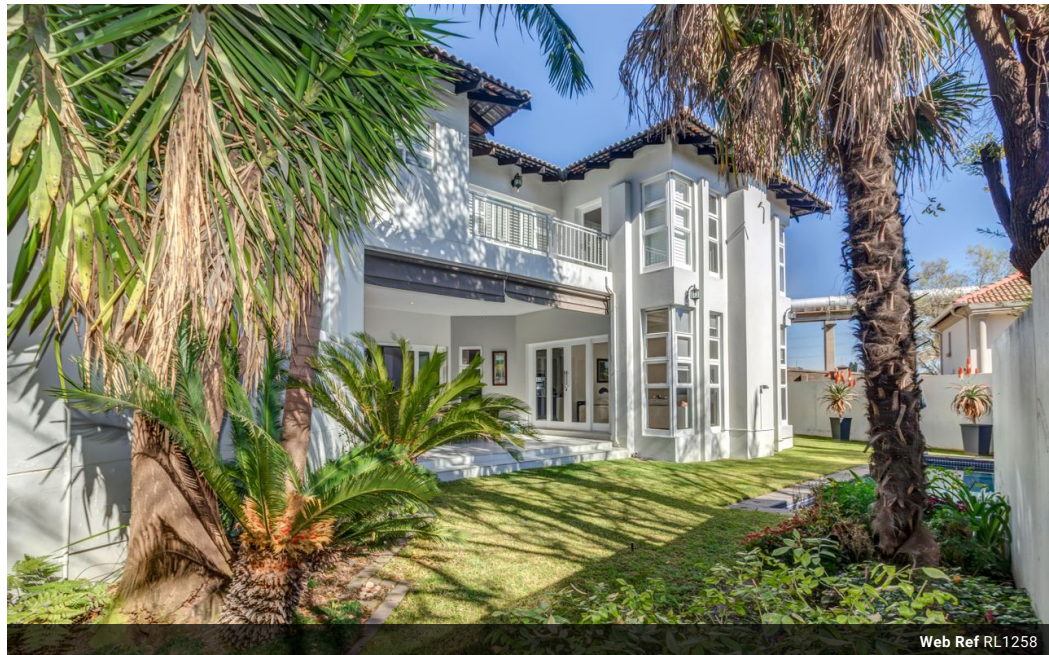
Willie Malherbe  
0834257174  
willie@malherbex.com

Contact Head Office

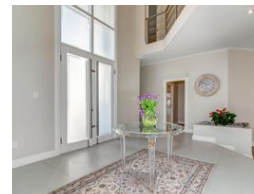
011 7869364

Unit 1 Cyrus House (Building 13) Mulberry  
Hill Office Park, Dainfern, Sandton, 2191

## 5 Bedroom House For Sale in Dainfern Valley Estate



Web Ref RL1258



R8,795,000

🛏 5 🛁 4.5 🚗 3

**Monthly Bond Repayment** R87,807.51

Calculated over 20 years at 10.5% with no deposit.

**Transfer Costs** R842,902.00 **Bond Costs** R80,035.00

These calculations are only a guide. Please ask your conveyancer for exact calculations.

**Monthly Levy** R4,510

Modern living in an ideal location

ON SHOW SUNDAY AT 14:00 to 16:30

Contact agent for access and appointment

This stunning family home is located in the prestigious Dainfern Valley Estate, known for its peaceful and upscale surroundings. The house boasts an abundance of natural light and a sense of refined tranquility, making it an ideal setting for family living.

The spacious living areas, including two lounges and a large dining room, make entertaining effortless. The recently renovated kitchen is bright and inviting, equipped with a gas hob, a separate scullery, and a laundry area, combining practicality with high-end design.

This home features five generously sized bedrooms, each with its own en-suite bathroom, offering privacy and comfort. The main bedroom stands out with its luxurious, newly renovated modern bathroom and walk-in closet. The fifth...

### Features

**Pets Allowed** Yes

#### Interior

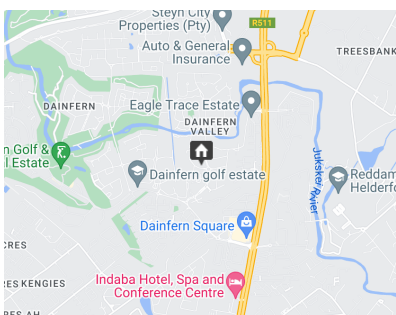
Bedrooms	5
Bathrooms	4.5
Kitchens	1
Recep. Rooms	3
Furnished	No

#### Exterior

Garages	3
Security	No
Dom. Accom.	2
Pool	Yes
Views	False

#### Sizes

Floor Size	520m <sup>2</sup>
Land Size	1,024m <sup>2</sup>



<https://www.malherbex.com>