



MALHERBEX™
PROPERTY GROUP



Willie Malherbe
0834257174
willie@malherbex.com

Contact Head Office

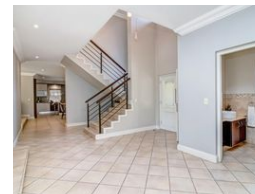
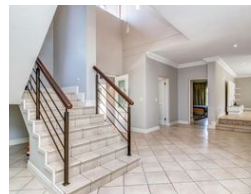
011 7869364

Unit 1 Cyrus House (Building 13) Mulberry
Hill Office Park, Dainfern, Sandton, 2191

5 Bedroom House For Sale in Dainfern Valley Estate



Web Ref RL1319



R6,995,000

🛏 5 🛁 4.5 🚗 4

Monthly Bond Repayment R71,015.27

Calculated over 20 years at 10.75% with no deposit.

Transfer Costs R633,216.00 **Bond Costs** R70,535.00

These calculations are only a guide. Please ask your conveyancer for exact calculations.

Monthly Levy R4,510

Five bedroom home in Dainfern Valley Estate

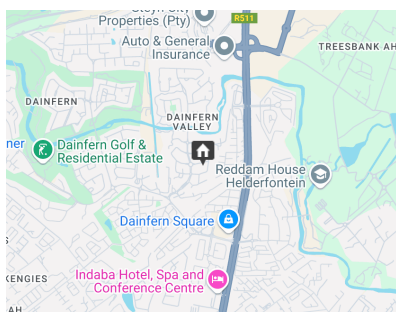
Nestled in the prestigious Dainfern Valley Estate, this magnificent five-bedroom home is situated on a corner stand, and exudes elegance and luxury, perfect for a large family that loves to entertain.

The home welcomes you with an impressive entrance that leads into bright, sunlit spaces, creating a seamless flow from indoors to the outdoors. A large covered patio overlooks the sparkling pool and manicured garden, complete with a built-in gas braai for outdoor dining.

Inside, the elegant lounge features a gas fireplace and air conditioning, offering a warm retreat, while the spacious family room connects effortlessly with the gourmet kitchen and sophisticated dining area. The kitchen is designed for culinary enthusiasts, equipped with a stunning Ilve oven and hob, a second oven, a large pantry, and a scullery, providing...

Features

Pets Allowed		Yes	
Interior		Exterior	
Bedrooms	5	Garages	4
Bathrooms	4.5	Dom. Accom.	1
Kitchens	1	Pool	Yes
Recep. Rooms	3		
Studies	1		
		Sizes	
		Floor Size	570m ²
		Land Size	899m ²



<https://www.malherbex.com>