



MALHERBEX™
PROPERTY GROUP



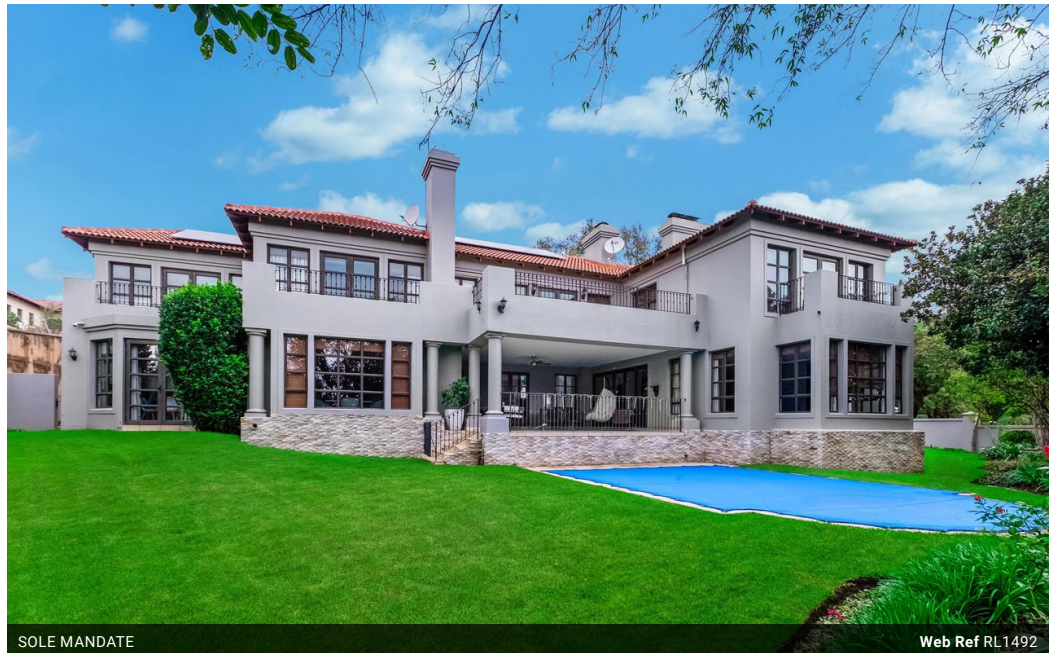
Willie Malherbe
0834257174
willie@malherbex.com

Contact Head Office

011 7869364

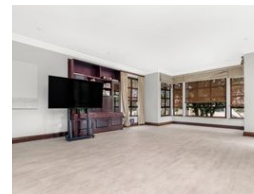
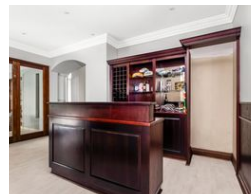
Unit 1 Cyrus House (Building 13) Mulberry
Hill Office Park, Dainfern, Sandton, 2191

4 Bedroom House For Sale in Dainfern Valley Estate



SOLE MANDATE

Web Ref RL1492



R7,995,000

🛏️ 4 🛁 4.5 🚗 2

Monthly Bond Repayment R81,167.55

Calculated over 20 years at 10.75% with no deposit.

Transfer Costs R748,678.00 **Bond Costs** R75,285.00

These calculations are only a guide. Please ask your conveyancer for exact calculations.

Monthly Levy R4,510

Stylish Family Residence in Prestigious Dainfern Valley Estate

EXCLUSIVE SOLE MANDATE

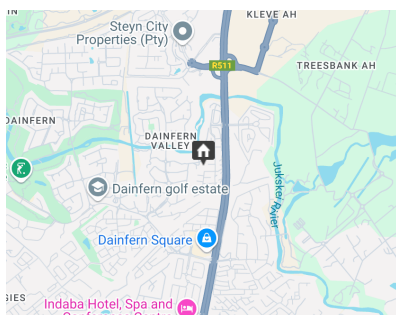
This elegant and spacious family home, set on a generous stand in the esteemed Dainfern Valley Estate, offers a refined blend of comfort, functionality, and sophisticated estate living. Ideal for those seeking a premium property in a secure and well-established community, the home is thoughtfully designed to accommodate both everyday living and effortless entertaining.

The double-volume entrance hall creates a striking first impression, flowing seamlessly into the lounge, built-in bar, and formal dining area. The kitchen is well-equipped for the home chef, featuring a gas hob, ample workspace, and stylish cabinetry, complemented by a separate scullery for added convenience. A sunny breakfast nook offers a welcoming space for casual family meals.

On the ground floor, a private guest suite with...

Features

Pets Allowed		Yes	
Interior		Exterior	
Bedrooms	4	Garages	2
Bathrooms	4.5	Security	No
Kitchens	1	Dom. Accom.	2
Recep. Rooms	3	Pool	Yes
Studies	1		
Sizes		Land Size	
		1,462m²	



<https://www.malherbex.com>