



MALHERBEX™
PROPERTY GROUP



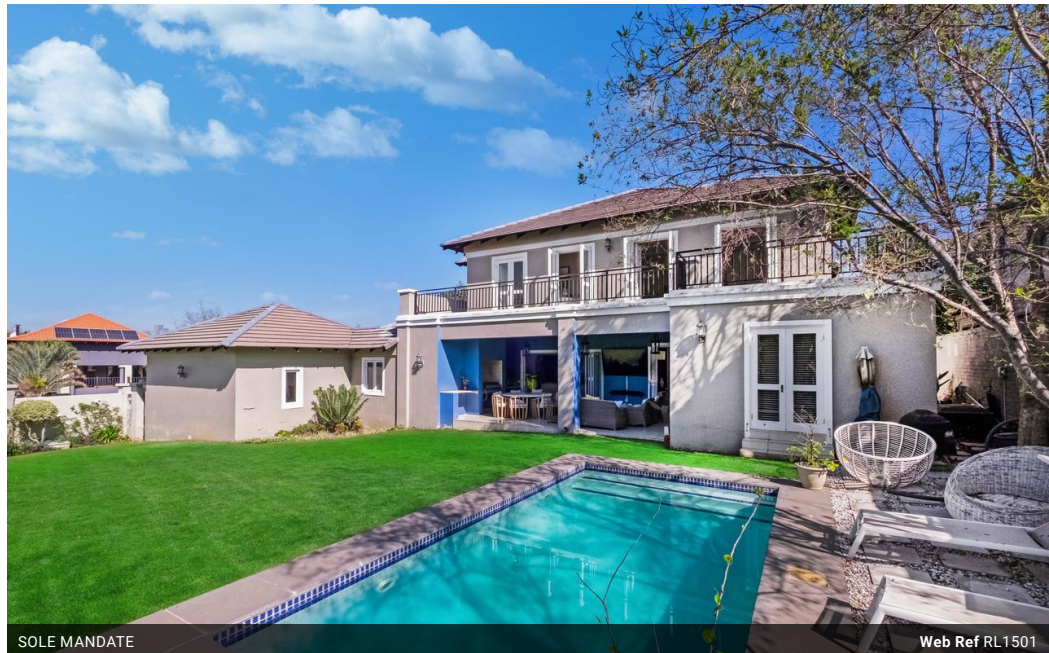
Willie Malherbe
0834257174
willie@malherbex.com

Contact Head Office

011 7869364

Unit 1 Cyrus House (Building 13) Mulberry
Hill Office Park, Dainfern, Sandton, 2191

4 Bedroom House For Sale in Dainfern Valley Estate



SOLE MANDATE

Web Ref RL1501



R6,800,000

4 4.5 2

Monthly Bond Repayment R69,035.57

Calculated over 20 years at 10.75% with no deposit.

Transfer Costs R611,766.00 **Bond Costs** R70,535.00

These calculations are only a guide. Please ask your conveyancer for exact calculations.

Monthly Levy R4,510

Refined Family Living in a Prime Corner Position of prestigious Dainfern Valley Estate

EXCLUSIVE SOLE AGENT

Nestled in a private corner of the prestigious Dainfern Valley Estate, this expansive four-bedroom residence offers the perfect blend of space, comfort, and elegant design. Upon entering, you're welcomed by an impressive double-volume entrance hall, setting the tone for the light-filled and flowing layout that follows.

The open-plan, eat-in kitchen - ideal for culinary enthusiasts - seamlessly connects to the dining and living areas, boasting a combustion wood-burning fireplace. Entertaining is effortless, with stack-back doors opening to a generous covered patio featuring a gas braai, all overlooking a large, beautifully manicured garden and sparkling pool.

Upstairs, you'll find three well-appointed bedrooms, each with its own full bathroom. The luxurious master suite boasts walk-in wardrobes and...

Features

Pets Allowed Yes

Interior

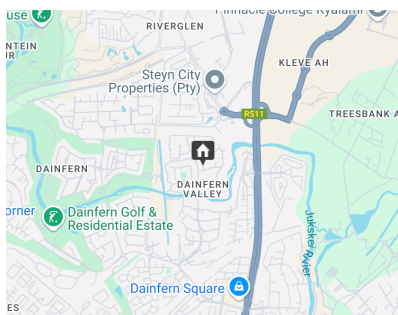
Bedrooms	4
Bathrooms	4.5
Kitchens	1
Recep. Rooms	2
Studies	1
Furnished	No

Exterior

Garages	2
Security	Yes
Dom. Accom.	1
Pool	Yes
Views	False

Sizes

Floor Size	445m ²
Land Size	944m ²



<https://www.malherbex.com>