



MALHERBEX™
PROPERTY GROUP



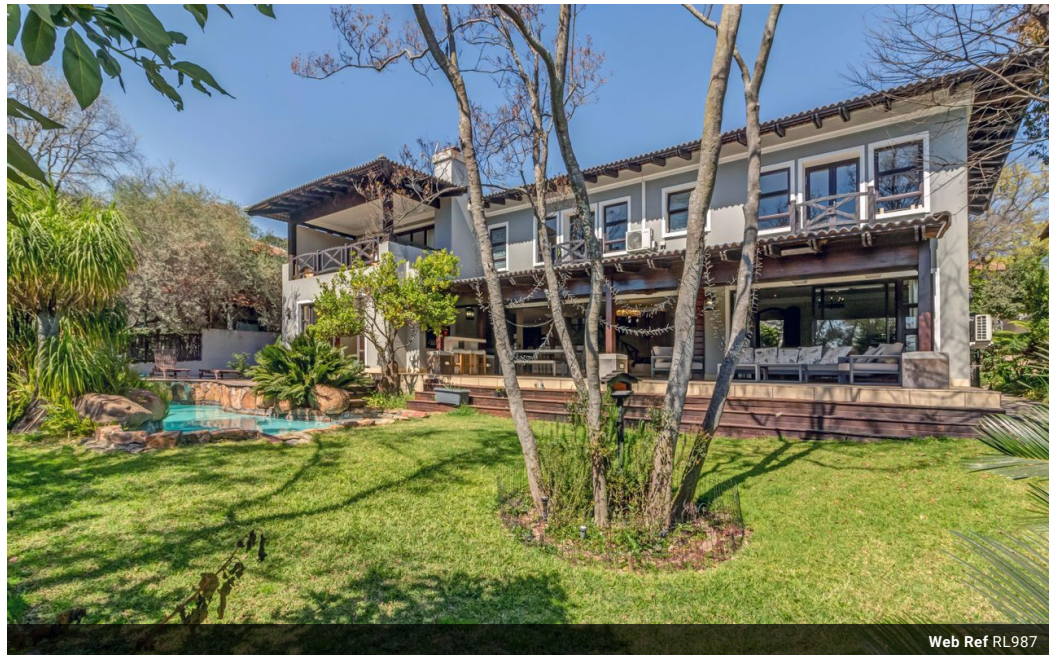
Willie Malherbe
0834257174
willie@malherbex.com

Contact Head Office

011 7869364

Unit 1 Cyrus House (Building 13) Mulberry
Hill Office Park, Dainfern, Sandton, 2191

4 Bedroom House For Sale in Dainfern Valley Estate



Web Ref RL987



R10,900,000

🛏️ 4 🛁 4.5 🚗 3

Monthly Bond Repayment R110,659.96

Calculated over 20 years at 10.75% with no deposit.

Transfer Costs R1,085,827.00 **Bond Costs** R89,535.00

These calculations are only a guide. Please ask your conveyancer for exact calculations.

Monthly Levy R4,510

Prime position on the river

Experience the unparalleled offerings of Dainfern Valley Estate at its finest. Nestled along the riverbanks with a sweeping greenbelt gracing your vista, this executive residence presents a wealth of contemporary amenities tailored to modern family aspirations. The dwelling is designed with an open-concept ethos and boasts four generously sized en-suite bedrooms. A cutting-edge, open-plan kitchen with a breakfast bar adjoins a family lounge featuring an inviting fireplace. Beyond, a spacious patio, complete with a built-in braai, commands views of the meandering river and the verdant expanse of the greenbelt.

The residence has centralized air-conditioning, full solar, water base underfloor heating system, three automated garages, and supplementary staff accommodation.

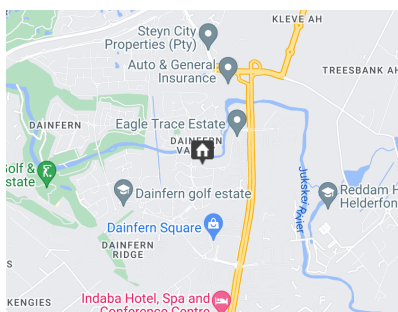
On the lower level of the home, you will encounter...

Features

Pets Allowed	Yes
Interior	
Bedrooms	4
Bathrooms	4.5
Kitchens	1
Recep. Rooms	3
Studies	1
Furnished	No

Exterior	
Garages	3
Security	No
Dom. Accom.	1
Pool	Yes
Views	False

Sizes	
Floor Size	600m ²
Land Size	1,137m ²



<https://www.malherbex.com>