



MALHERBEX™
PROPERTY GROUP



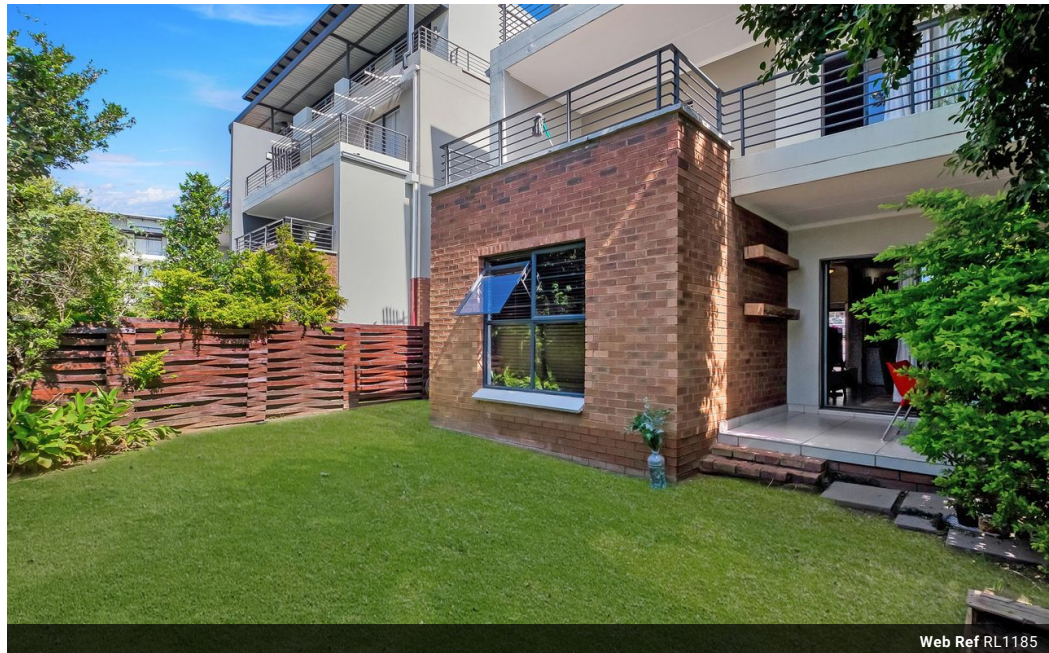
Busi Chizwina
0713847066
busi@malherbex.com

Contact Head Office

011 7869364

Unit 1 Cyrus House (Building 13) Mulberry
Hill Office Park, Dainfern, Sandton, 2191

3 Bedroom Apartment For Sale in Dainfern



Web Ref RL1185



R1,450,000

🛏 3 🚿 2

Monthly Bond Repayment R14,720.82

Calculated over 20 years at 10.75% with no deposit.

Transfer Costs R44,285.00 **Bond Costs** R28,990.00

These calculations are only a guide. Please ask your conveyancer for exact calculations.

Monthly Levy R1,945 **Monthly Rates** R600

Contemporary Garden Apartment

Contemporary 3-bedroom Apartment with Garden, Perfect for Lifestyle Living

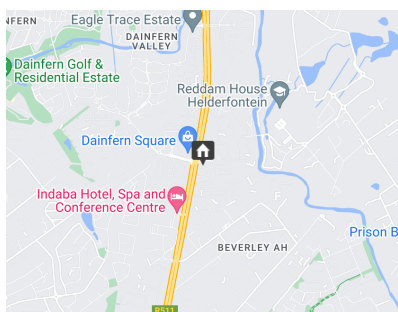
Nestled within the Estate, this modern and spacious apartment boasts three generously sized bedrooms, including a master bedroom with its en-suite bathroom. The open-plan layout seamlessly connects the living area to a covered patio and a meticulously maintained private garden.

The kitchen is a chef's delight, featuring granite countertops, a gas hob, and ample space for appliances including a tumble dryer and fridge. With two covered carports, pre-paid electricity, and fiber optic connectivity, convenience is paramount.

Experience the epitome of lifestyle living with state-of-the-art 24-hour biometric access-controlled security. The estate offers a plethora of amenities, from children's play areas to a restaurant, a fully equipped gym, a squash...

Features

Pets Allowed	Yes				
Interior		Exterior		Sizes	
Bedrooms	3	Carports / Parkings	2	Floor Size	94m²
Bathrooms	2	Security	No	Land Size	12,012m²
Kitchens	1	Pool	Yes		
Recep. Rooms	2	Views	False		
Furnished	No				



<https://www.malherbex.com>