



MALHERBEX™
PROPERTY GROUP



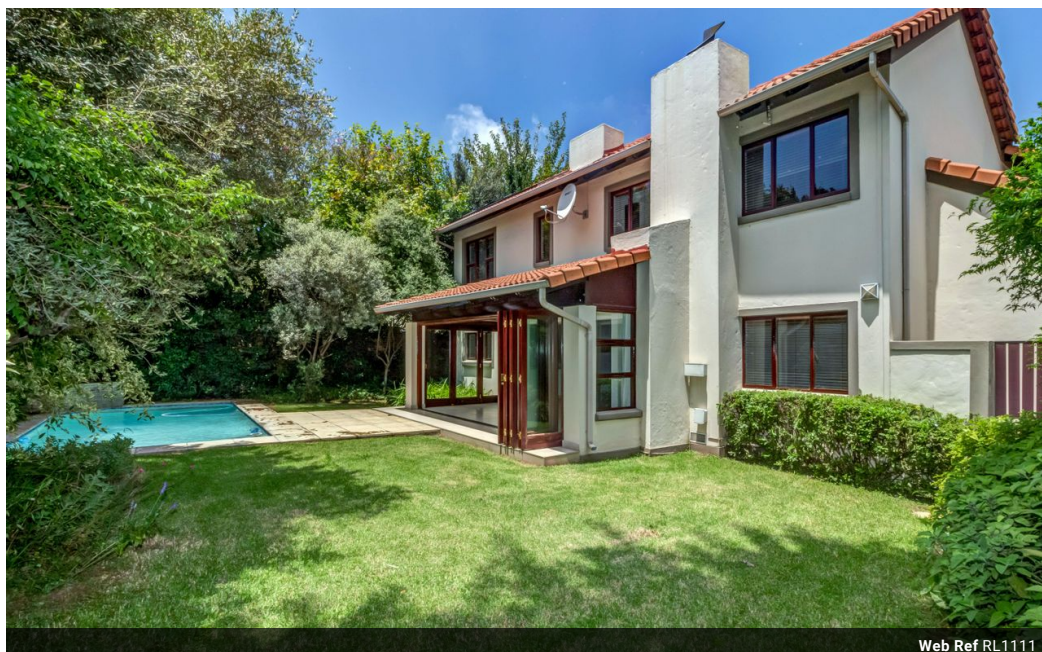
Willie Malherbe
0834257174
willie@malherbex.com

Contact Head Office

011 7869364

Unit 1 Cyrus House (Building 13) Mulberry
Hill Office Park, Dainfern, Sandton, 2191

4 Bedroom House For Sale in Dainfern



Web Ref RL1111



R3,495,000

4 2.5 2

Monthly Bond Repayment R35,482.25

Calculated over 20 years at 10.75% with no deposit.

Transfer Costs R221,164.00 **Bond Costs** R47,840.00

These calculations are only a guide. Please ask your conveyancer for exact calculations.

Monthly Levy R2,100 **Monthly Rates** R1,700

Beautifully renovated 4 bedroomed home

Recently renovated, this impeccably maintained family residence is a true hidden treasure in a highly sought-after estate. Ideally situated on a spacious plot with a northeast orientation, the home enjoys abundant natural light. Loadshedding is a thing of the past with this energy-efficient home! Boasting four bedrooms, this stunning property offers you and your family a lavish and inviting living experience.

Upon entering, you are welcomed by open-plan living and entertainment spaces featuring a built-in wood-burning fireplace, an integrated central heating system, and a stylish built-in bar. The expansive living room is ideal for both relaxation and hosting guests. These areas seamlessly connect to the modern, newly renovated kitchen and a covered entertainment patio. The kitchen has ample cupboard and appliance space, a...

Features

Pets Allowed	Yes				
Interior		Exterior		Sizes	
Bedrooms	4	Garages	2	Floor Size	272m²
Bathrooms	2.5	Pool	Yes	Land Size	438m²
Kitchens	1				
Recep. Rooms	2				



<https://www.malherbex.com>