



MALHERBEX™  
PROPERTY GROUP



**Willie Malherbe**  
0834257174  
willie@malherbex.com

Contact Head Office

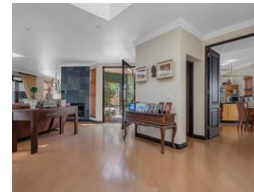
011 7869364

Unit 1 Cyrus House (Building 13) Mulberry  
Hill Office Park, Dainfern, Sandton, 2191

## 4 Bedroom House For Sale in Dainfern



Web Ref RL1253



R4,999,000

🛏️ 4 🛁 3.5 🚗 2

**Monthly Bond Repayment** R49,909.01

Calculated over 20 years at 10.5% with no deposit.

**Transfer Costs** R402,406.00 **Bond Costs** R61,035.00

These calculations are only a guide. Please ask your conveyancer for exact calculations.

**Monthly Levy** R2,990

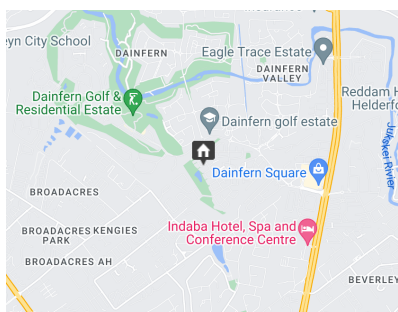
### 4 Bedroom home in Dainfern Ridge Estate

A home with all the luxury you need.

Nestled in the prestigious Dainfern Ridge Estate, just a stone's throw from Dainfern College, a north-facing gem bathed in natural light. This exquisite four bedroom home promises luxurious living with every modern convenience you could desire. Imagine waking up in the main suite, your sanctuary of tranquility. The stunning en-suite bathroom invites you to start the day with a touch of elegance, while the walk-in dressing room, with its cupboards reaching the ceiling, offers ample space for your wardrobe. Sliding glass doors lead you to the garden, where the morning sun greets you. With four skylights, underfloor heating, and two air conditioners in the home, comfort is assured no matter the season. The home's eco-friendly features are a marvel. Nine solar panels power a 10kW Vitron...

### Features

<b>Pets Allowed</b>	Yes				
<b>Interior</b>		<b>Exterior</b>		<b>Sizes</b>	
Bedrooms	4	Garages	2	Floor Size	394m²
Bathrooms	3.5	Security	Yes	Land Size	860m²
Kitchens	1	Dom. Accom.	1		
Recep. Rooms	4	Pool	Yes		
Studies	2				



<https://www.malherbex.com>