



MALHERBEX™
PROPERTY GROUP



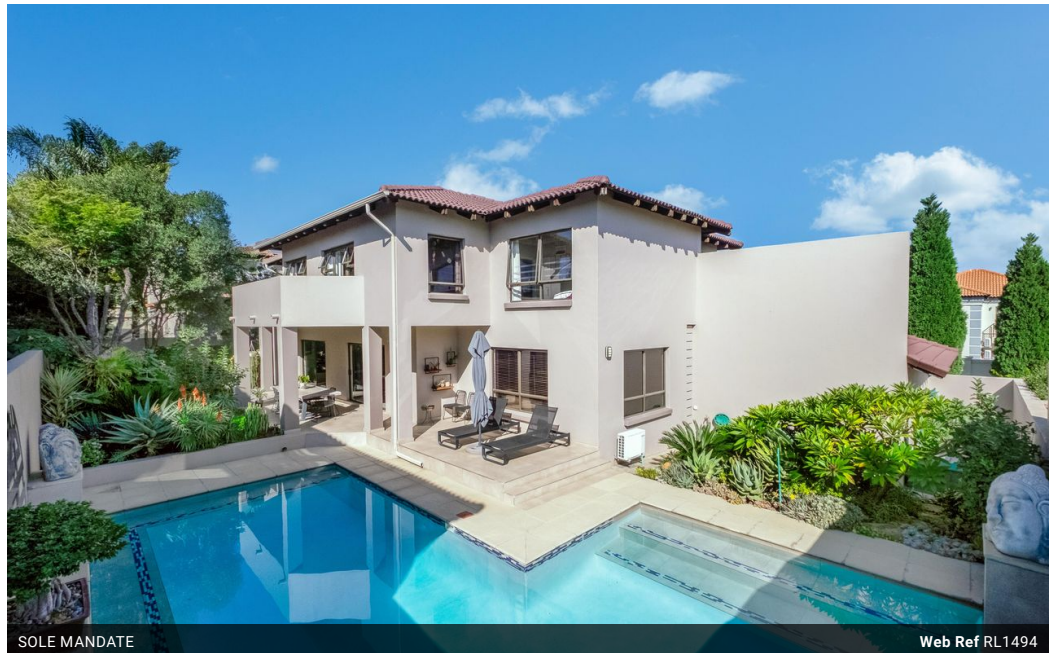
Willie Malherbe
0834257174
willie@malherbex.com

Contact Head Office

011 7869364

Unit 1 Cyrus House (Building 13) Mulberry
Hill Office Park, Dainfern, Sandton, 2191

3 Bedroom House For Sale in Dainfern



SOLE MANDATE

Web Ref RL1494



R5,450,000

3 3.5 2

Monthly Bond Repayment R55,329.98

Calculated over 20 years at 10.75% with no deposit.

Transfer Costs R457,307.00 **Bond Costs** R65,785.00

These calculations are only a guide. Please ask your conveyancer for exact calculations.

Monthly Levy R2,165

Refined Luxury & Seamless Entertaining in Secure Fernridge Estate

EXCLUSIVE SOLE AGENT: Set within the secure and sought-after Fernridge Estate, this impeccably renovated double-story residence offers a refined lifestyle of comfort, style, and seamless entertaining.

From the moment you enter, it's clear no detail has been overlooked. Every space is immaculately presented, showcasing a luxurious design with high-end finishes throughout. The open-plan living areas flow effortlessly to a generous covered patio - an entertainer's haven complete with a bespoke bar, sunlit swimming pool, and tranquil views of the surrounding natural beauty.

At the heart of the home is a dream kitchen designed to inspire, featuring marble countertops, a separate scullery, and dual integrated Smeg ovens - perfect for both everyday meals and gourmet occasions.

Upstairs, three bright and airy bedrooms are...

Features

Pets Allowed Yes

Interior

Bedrooms	3
Bathrooms	3.5
Kitchens	1
Recep. Rooms	2

Exterior

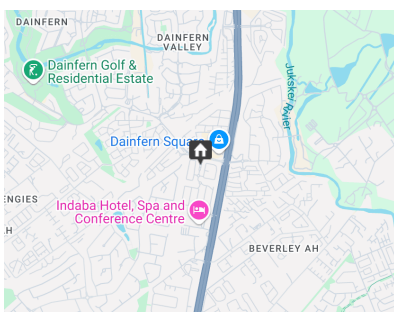
Garages	2
Security	Yes
Dom. Accom.	1
Pool	Yes
Views	No

Sizes

Land Size	642m ²
-----------	-------------------

Extras

- State-of-the-art backup power system



<https://www.malherbex.com>