



MALHERBEX™
PROPERTY GROUP



Willie Malherbe
0834257174
willie@malherbex.com



Janine Meyer
0716890860
janine@malherbex.com



Elmine Clarke
0686913384
elmine@malherbex.com

Contact Head Office

011 7869364

Unit 1 Cyrus House (Building 13) Mulberry
Hill Office Park, Dainfern, Sandton, 2191

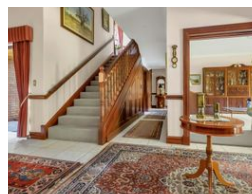
3 Bedroom House For Sale in Fourways Gardens

UNDER OFFER



SOLE MANDATE

Web Ref RL1312



R5,995,000

3 3 2

Monthly Bond Repayment R60,862.98

Calculated over 20 years at 10.75% with no deposit.

Transfer Costs R517,257.00 **Bond Costs** R65,785.00

These calculations are only a guide. Please ask your conveyancer for exact calculations.

Monthly Levy R3,170

A Haven of Comfort and Style

ON SHOW BY APPOINTMENT SUNDAY 17 NOVEMBER FROM
15h00 to 17h00. CALL AGENT FOR ACCESS AND APPOINTMENT
SOLE EXCLUSIVE MANDATE

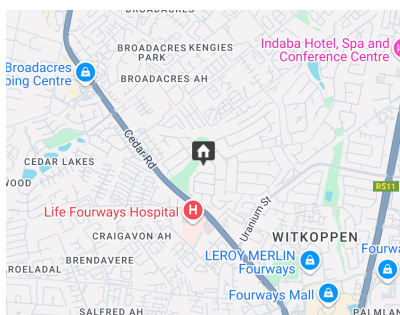
Nestled in the heart of the prestigious Fourways Gardens Residential Estate, lies an exquisite English Tudor-style home, boasting elegance, architectural perfection and timeless beauty. This charming home is positioned directly across from the serene Phase 1 park and just a stone's throw from a picturesque nature reserve, offers not only luxurious living but also an unparalleled location.

As you step inside, the allure of spacious, tastefully designed bedrooms and reception rooms welcomes you. The home offers three spacious bedrooms, all en-suite.

The heart of the home beats in its large, flowing reception areas. A formal lounge sets the tone for elegant gatherings, while the family room,...

Features

Pets Allowed		Yes			
Interior		Exterior		Sizes	
Bedrooms	3	Garages	2	Floor Size	629m²
Bathrooms	3	Carports / Parkings	2	Land Size	1,183m²
Kitchens	1	Security	Yes		
Recep. Rooms	3	Dom. Accom.	1		
Studies	1	Pool	No		
		Views	Yes		



<https://www.malherbex.com>