



MALHERBEX™
PROPERTY GROUP



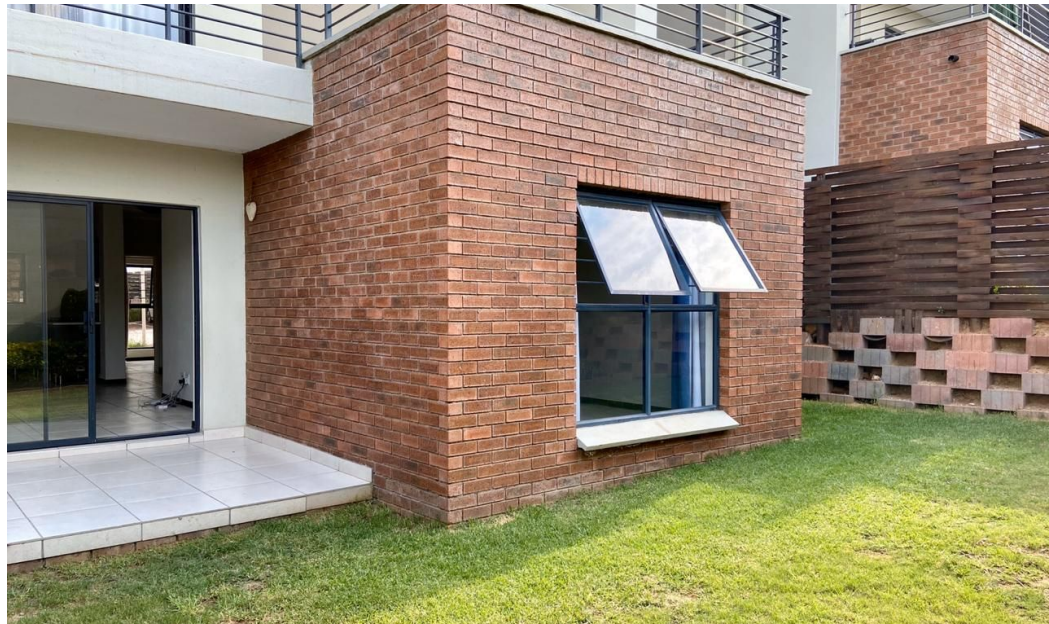
Janine Meyer
0716890860
janine@malherbex.com

Contact Head Office

011 7869364

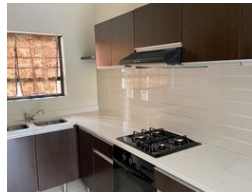
Unit 1 Cyrus House (Building 13) Mulberry
Hill Office Park, Dainfern, Sandton, 2191

3 Bedroom Apartment For Sale in Fourways



SOLE MANDATE

Web Ref RL846



R1,435,000

Monthly Bond Repayment R14,568.54

Calculated over 20 years at 10.75% with no deposit.

Transfer Costs R43,835.00

Bond Costs R28,990.00

These calculations are only a guide. Please ask your conveyancer for exact calculations.

Monthly Levy R1,945.1

Monthly Rates R600

🛏 3 🚿 2

Modern 3 Bedroom Garden Apartment for Sale

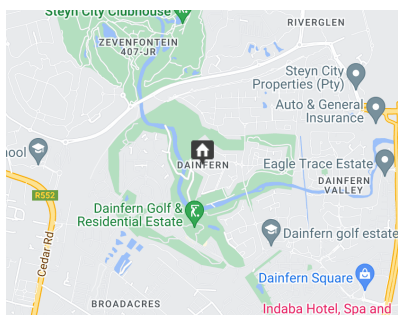
Lifestyle Living - Excellently positioned within the Estate, this spacious and modern apartment features three double sized bedrooms, two bathrooms, with the main en-suite, and open plan living space that leads to a covered patio and private well-maintained garden. The kitchen is fully equipped with granite countertops, a gas hob, with space for two water appliances as well as space for tumble dryer and a fridge. The apartment comes with two covered carports, pre-paid electricity and is fibre ready.

Lifestyle living at its best, with state of the art 24-hour biometric access controlled security, the estate offers many amenities, including children's play areas, a restaurant, a fully functional gym, squash court, swimming pool, braai areas, walking and running paths, and so much more.

Call today for a private...

Features

Pets Allowed		Yes	
Interior		Exterior	
Bedrooms	3	Carports / Parkings	2
Bathrooms	2	Security	Yes
Kitchens	1	Pool	Yes
Recep. Rooms	2	Views	False
Furnished	No		
		Sizes	
		Floor Size	94m²
		Land Size	12,012m²



<https://www.malherbex.com>