



MALHERBEX™
PROPERTY GROUP



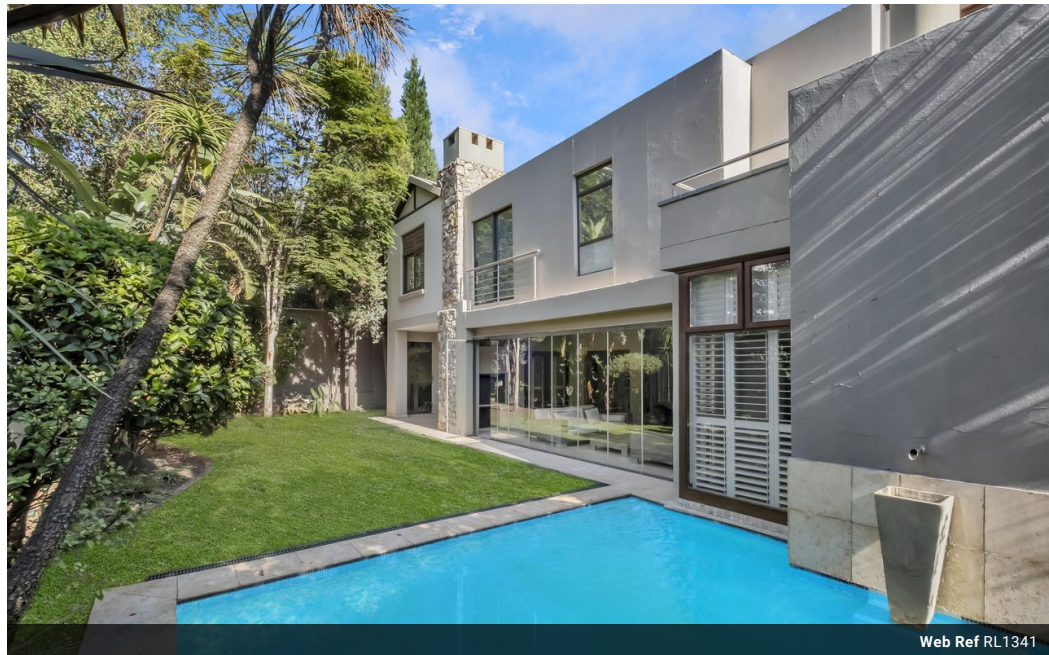
Dwayne Moffat
0680258263
dwayne@malherbex.com

Contact Head Office

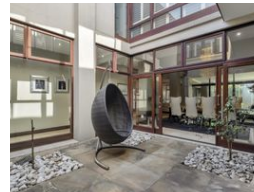
011 7869364

Unit 1 Cyrus House (Building 13) Mulberry
Hill Office Park, Dainfern, Sandton, 2191

5 Bedroom House For Sale in Hyde Park



Web Ref RL1341



R6,800,000

🛏 5 🚿 5 🚗 3

Monthly Bond Repayment R69,035.57

Calculated over 20 years at 10.75% with no deposit.

Transfer Costs R611,766.00 **Bond Costs** R70,535.00

These calculations are only a guide. Please ask your conveyancer for exact calculations.

Monthly Levy R8,650 **Monthly Rates** R6,700

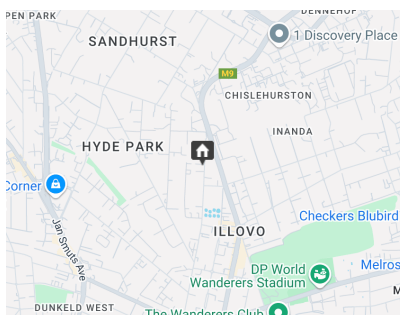
Great Location in Hyde Park

Introducing an exquisite residence that epitomizes sophistication and modern living. As you step inside, you are greeted by a grand double-volume foyer that effortlessly transitions into a tastefully appointed dining area, accentuated by an elegant chandelier. This intelligently designed layout promotes a seamless connection between the various living spaces, culminating in a delightful entertainment patio that overlooks a beautifully manicured garden, offering a serene escape from the everyday hustle.

The stylish kitchen is a chef's dream, featuring top-of-the-line finishes, including Caesarstone countertops and premium Smeg appliances, complete with double ovens and a gas cooktop, as well as an additional AEG electric hob. A separate scullery and laundry area enhance the kitchen's functionality, blending practicality with...

Features

Pets Allowed	Yes				
Interior		Exterior		Sizes	
Bedrooms	5	Garages	3	Floor Size	500m²
Bathrooms	5	Security	Yes	Land Size	675m²
Kitchens	1	Dom. Accom.	2		
Recep. Rooms	4	Pool	Yes		
Furnished	No	Views	False		



<https://www.malherbex.com>